

SO 100 KOMUNIKACE

ČÁST D

VÝŠKOVÝ SYSTÉM Bpv

SOUŘADNICOVÝ SYSTÉM S-JTSK

Číslo změny:	Obsah změny:	Datum změny:
01	-	-
02	-	-
03	-	-

Objednatel:



Královéhradecký kraj
Pivovarské náměstí 1245
500 03 Hradec Králové

Generální projektant:



SUDOP PRAHA a.s.
Olšanská 1a, 130 80 Praha 3
tel.: +420 267 094 111
fax: +420 224 230 316
e-mail: praha@sudop.cz

Hlavní inženýr projektu:

ING. LUKÁŠ BURIANEC

Garant profese:

ING. PAVEL HORÁČEK

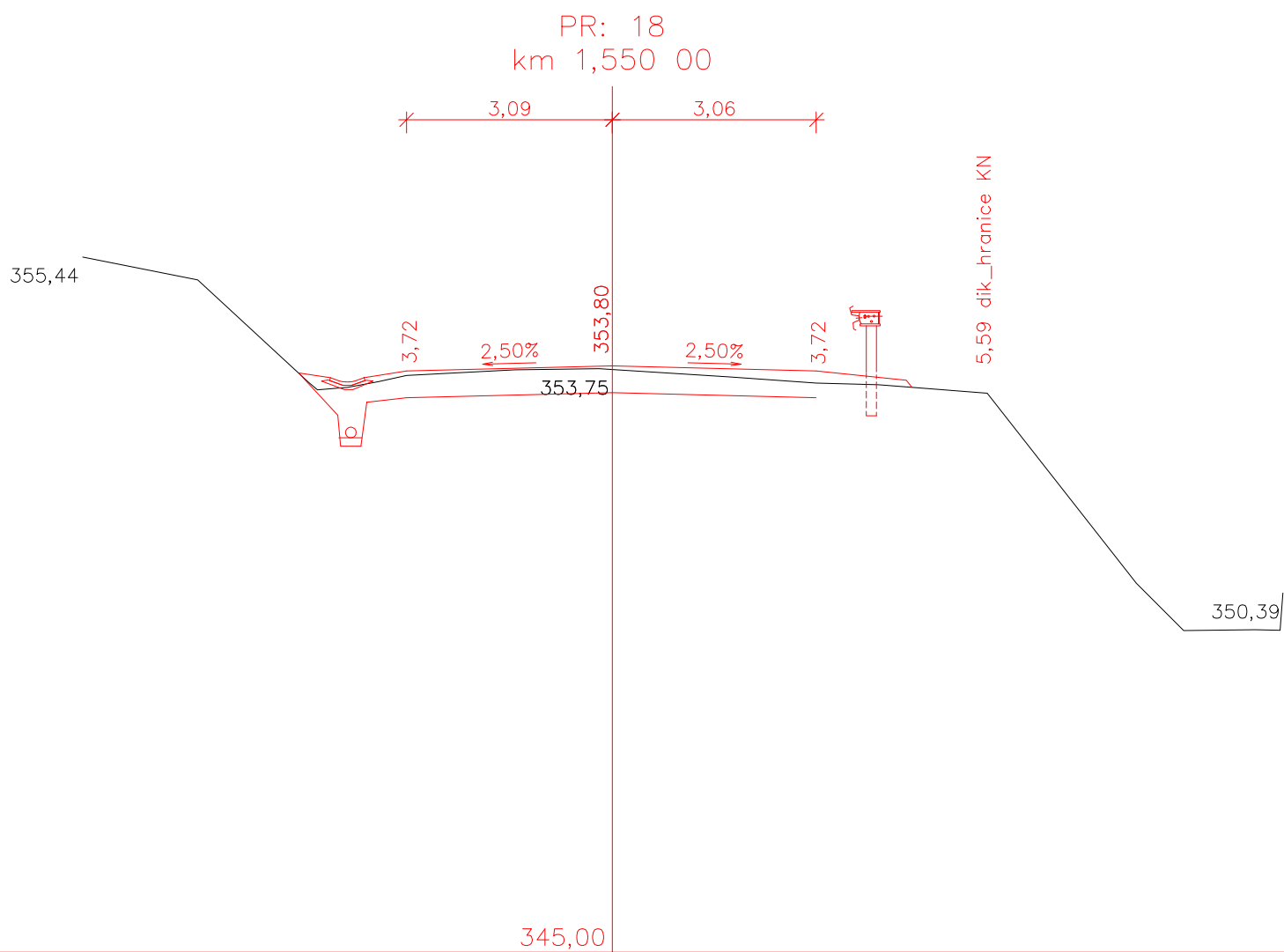
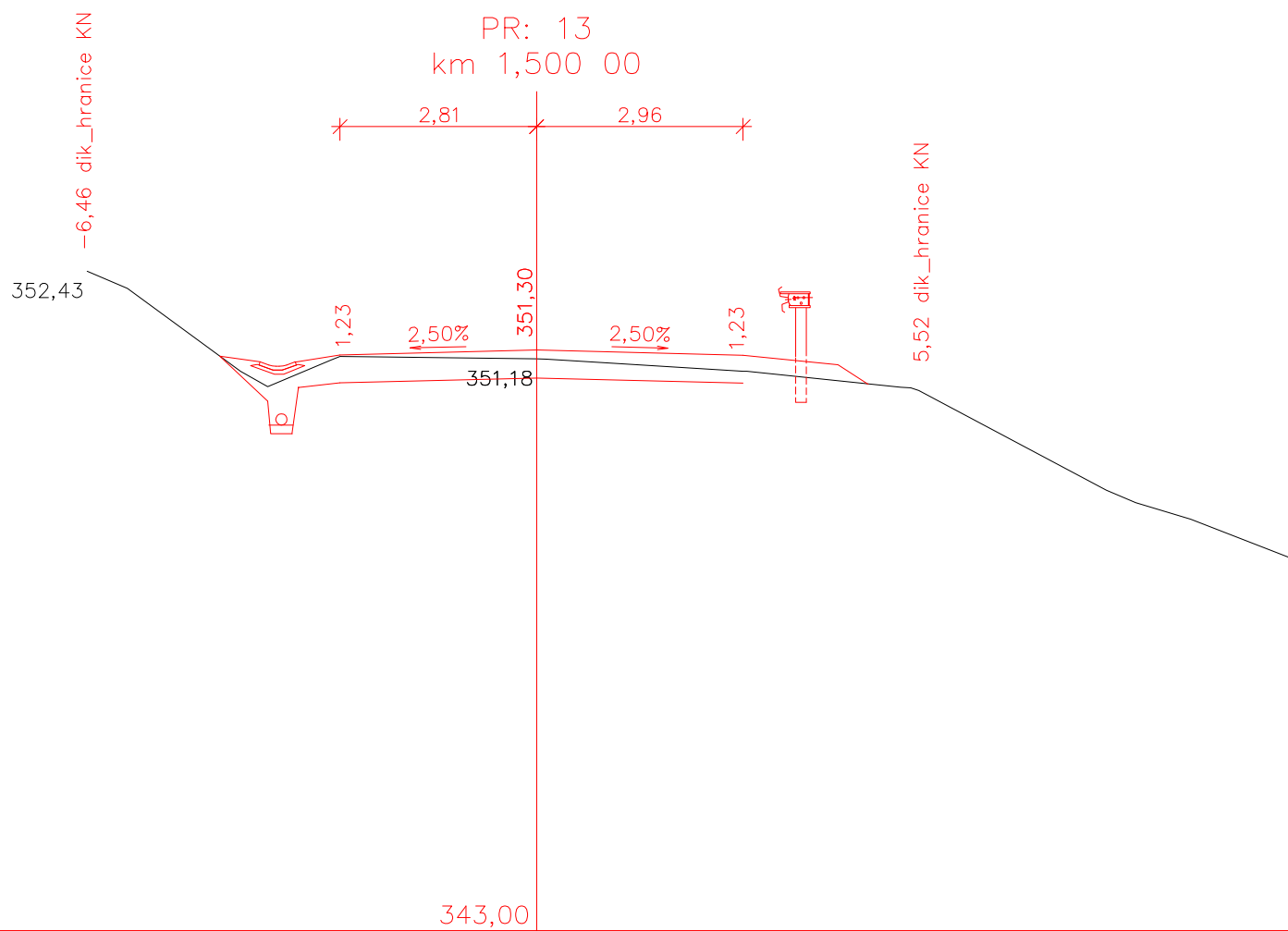
Zpracovatel části:



DOPRAVNĚ INŽENÝRSKÁ KANCELÁŘ
Bozděchova 1668, 500 02 Hradec Králové
tel : 495 219 036, 495 212 647, fax : 495 221 677
e-mail : dik@dik-hk.cz, http : www.dik-hk.cz

Vedoucí střediska: ING. MILOŠ BURIANEC	Odpovědný projektant SO, IO, PS: ING. MILOŠ BURIANEC	Vypracoval: ING. LUKÁŠ BURIANEC	Kontroloval: ING. MILOŠ BURIANEC
---	---	--	---

Název akce:	III/30011 Dvůr Králové Zálesí Doubravice, stavba III/30011 Dvůr Králové žel. přejezd - Doubravice		Číslo smlouvy:	16-311.250
			Projektový stupeň:	DSP/PDPS
Část:	KOMUNIKACE		Datum:	03/2019
			Číslo části:	D
Název přílohy:	CHARAKTERISTICKÉ PŘÍČNÉ ŘEZY		Měřítko:	1:100
			Počet formátů:	D1.1.5

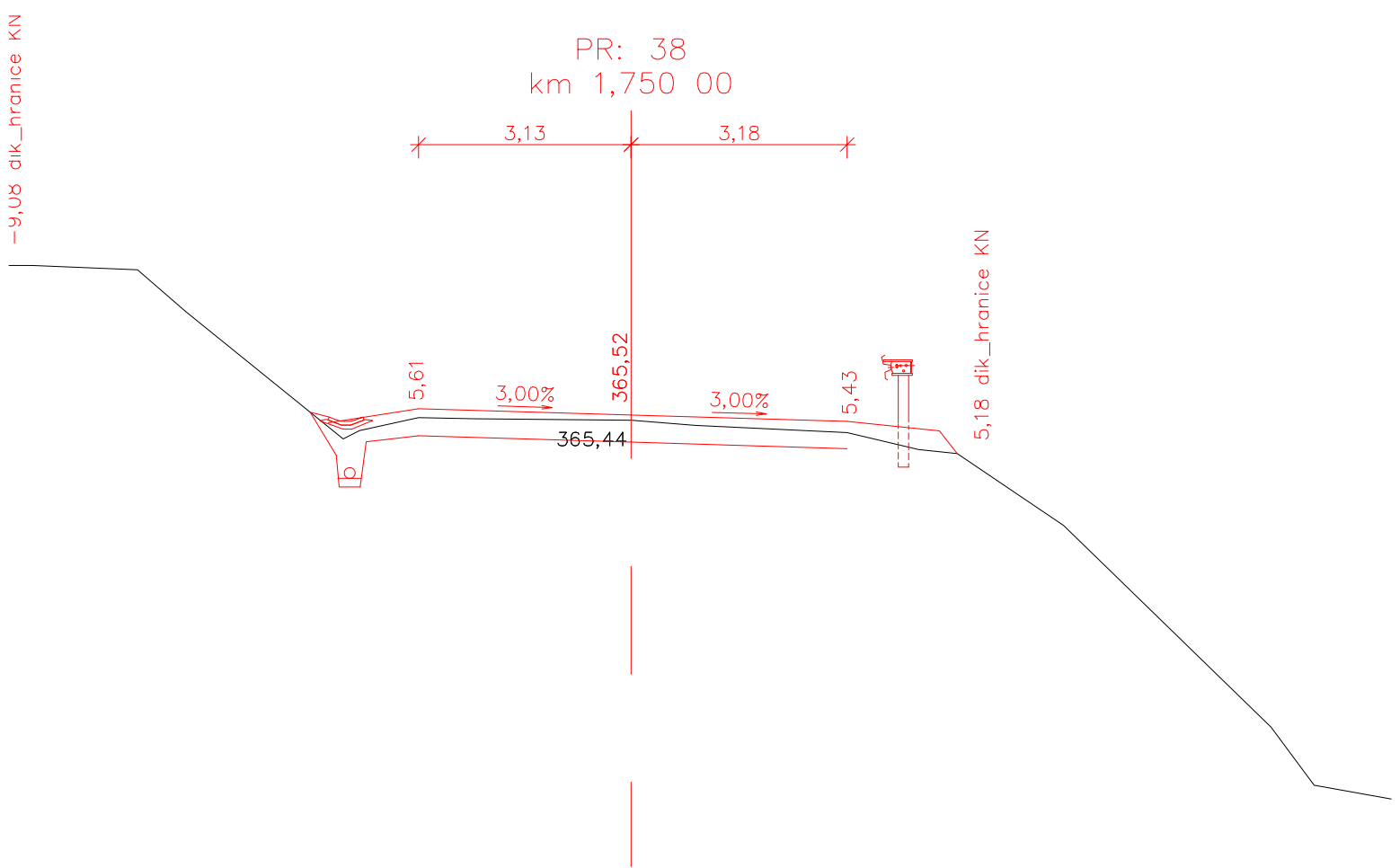
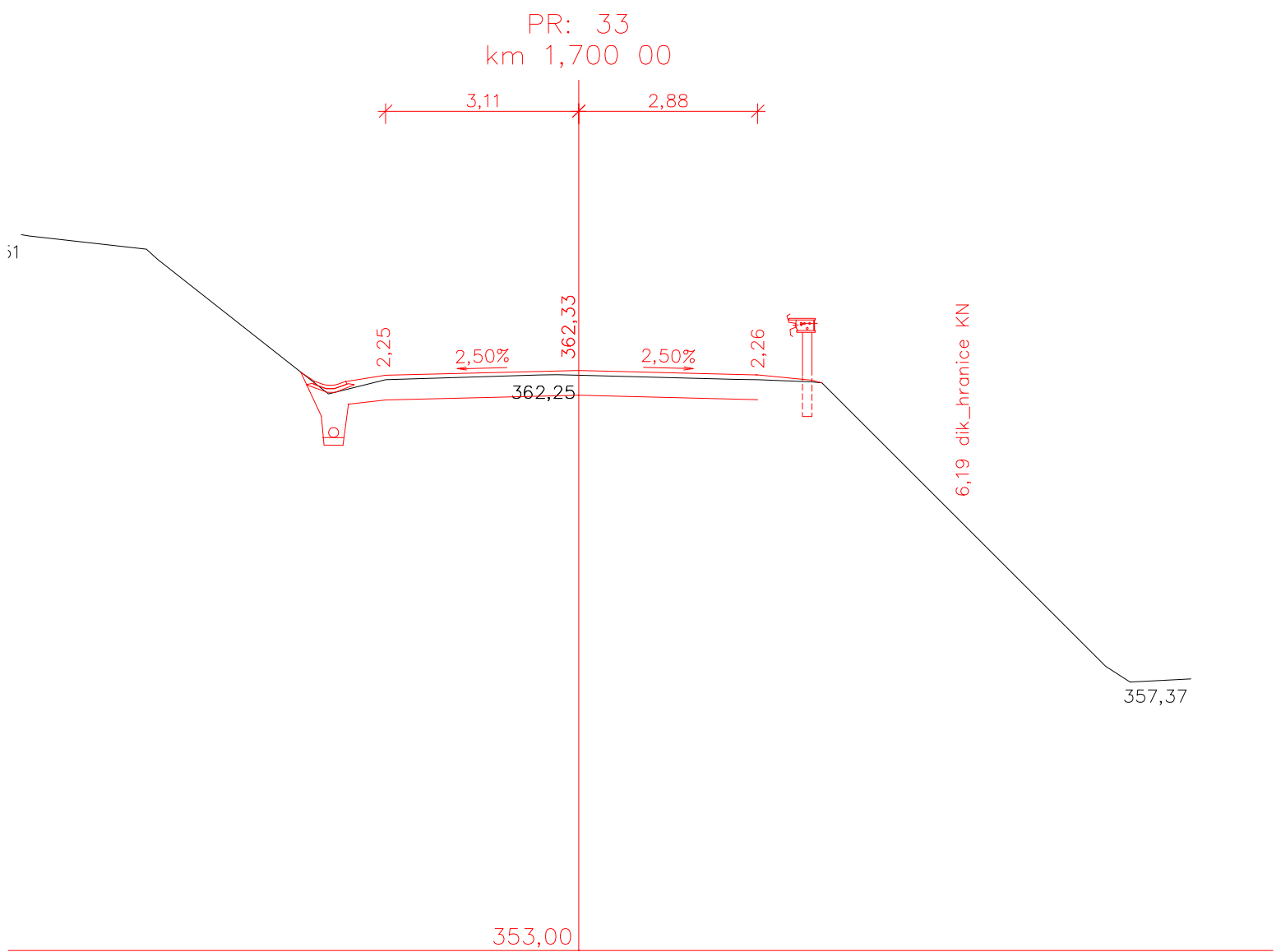


A horizontal line segment is shown, divided into two parts by a vertical tick mark in the middle. The left part is labeled "2,70" and the right part is labeled "2,85". The total length of the segment is indicated as "5,55" below the line.



A horizontal number line with three tick marks. The first segment is labeled 2,81 and the second segment is labeled 2,96. A vertical line is drawn at the end of the second segment.





PR: 43
km 1,800 00

3,15 3,13

369,85

8,57

3,00%

368,48

3,00%

8,39

368,41

5,23 dik_hranice KN

358,00

PR: 48
km 1,850 00

3,21 3,38

8,29 dik_hranice KN

1,34

4,06%

371,48

4,06%

1,62

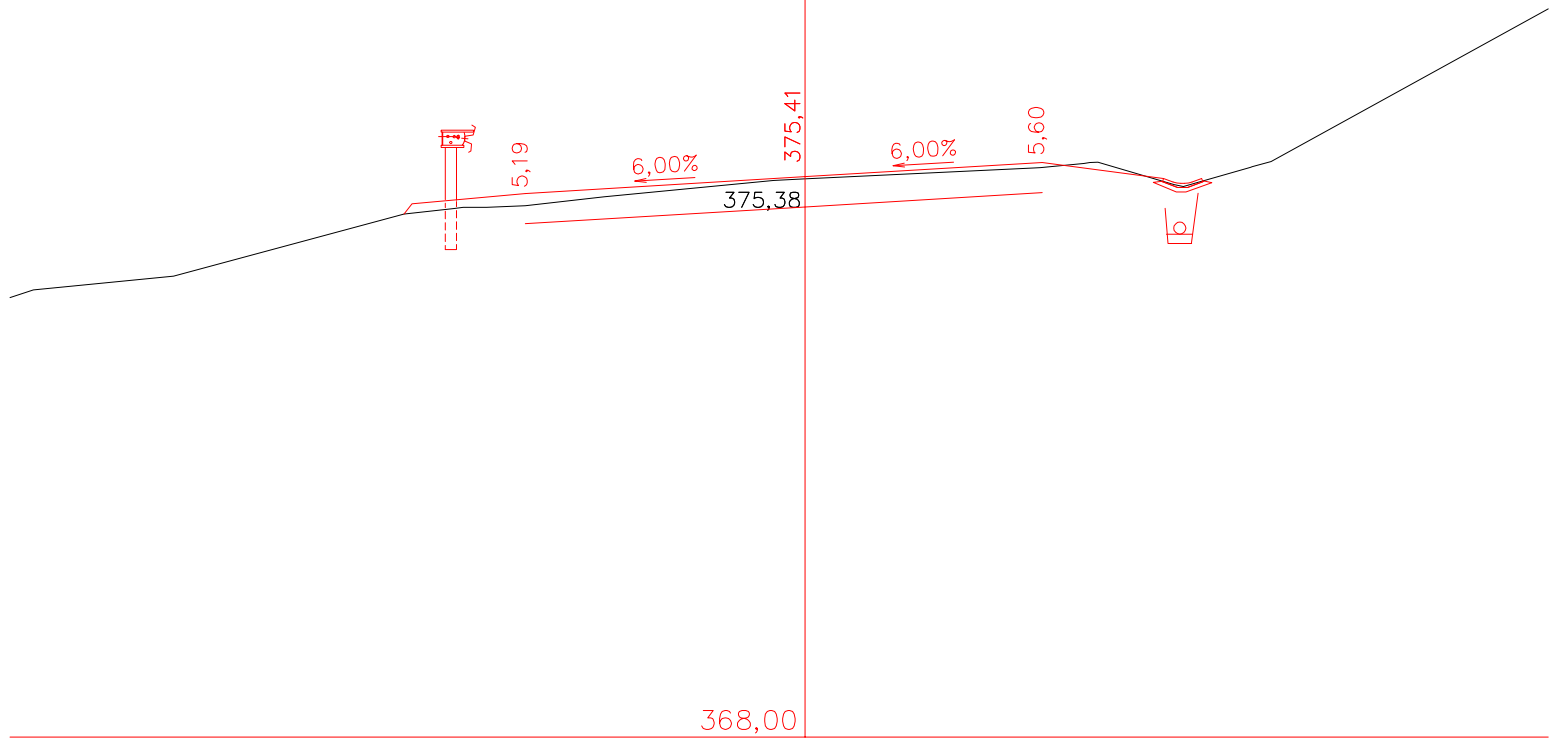
371,41

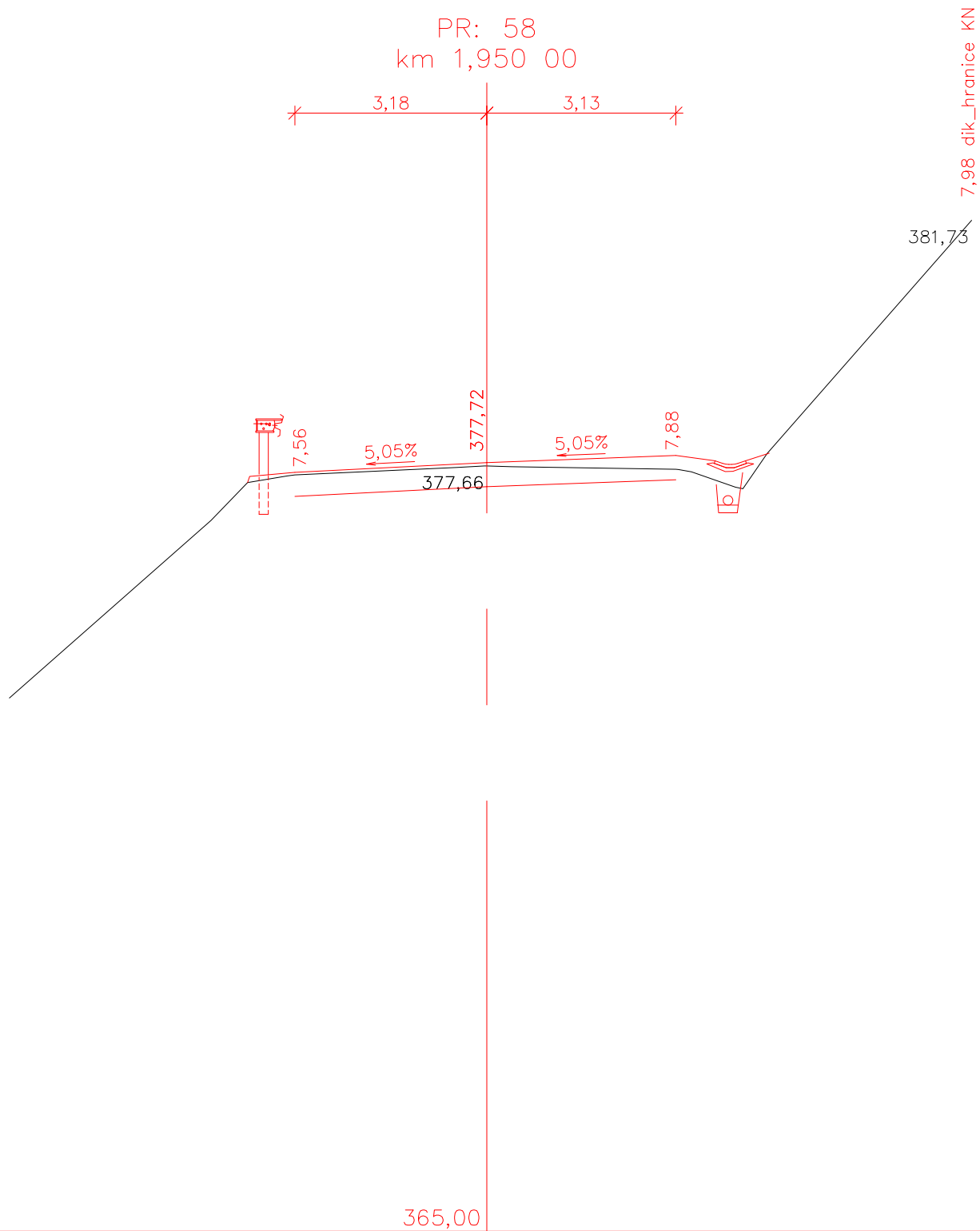
365,84

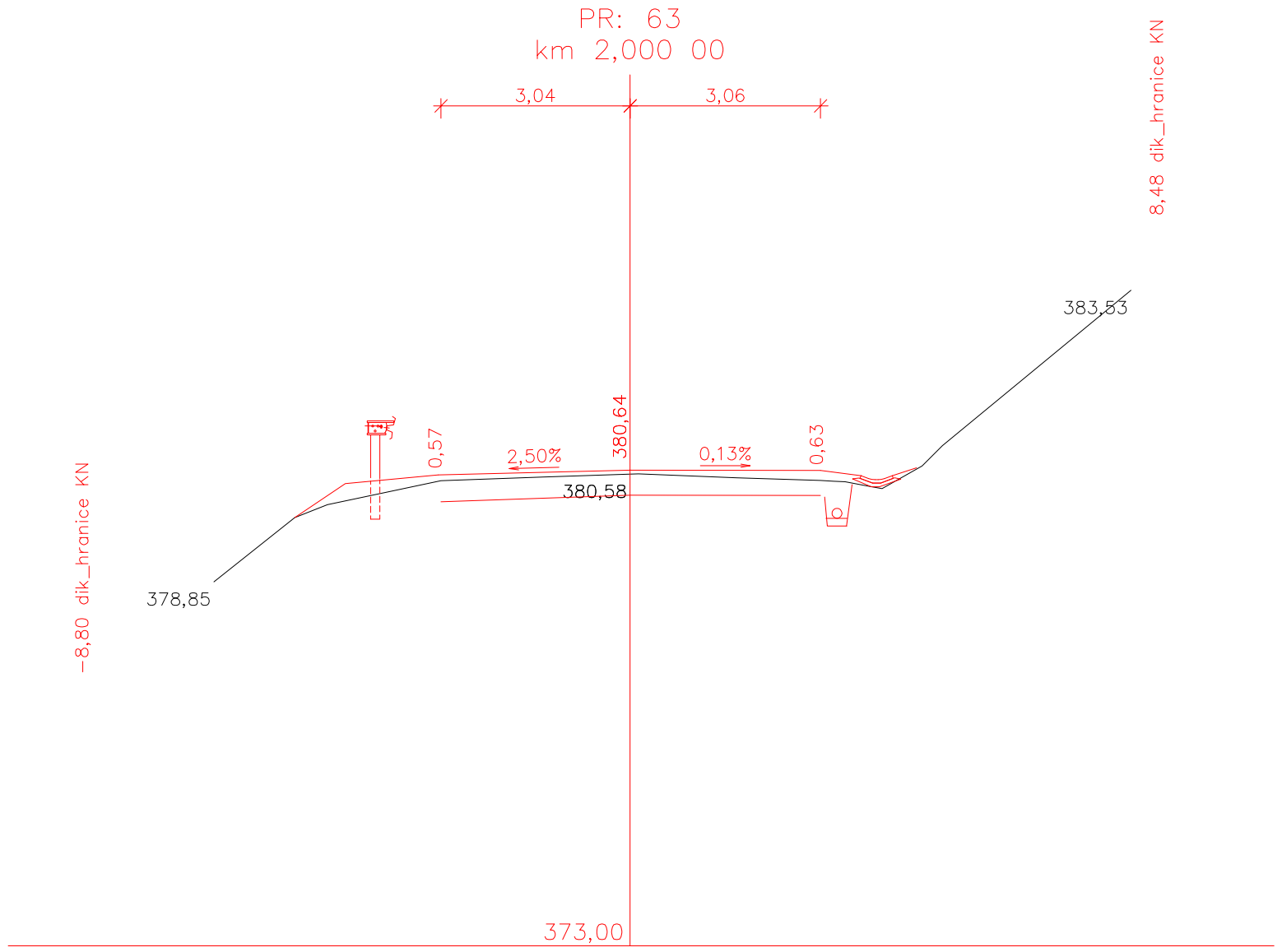
361,00

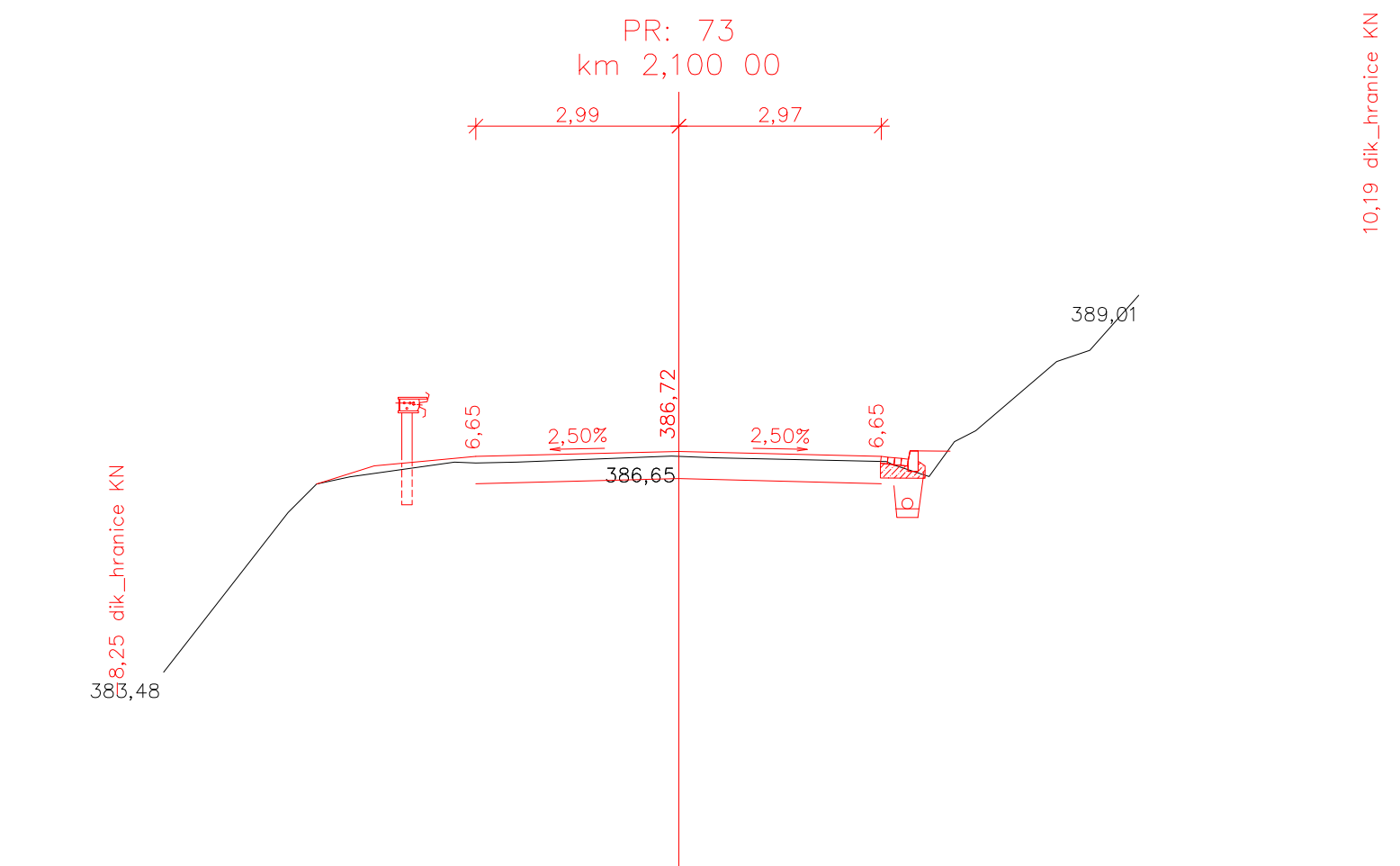
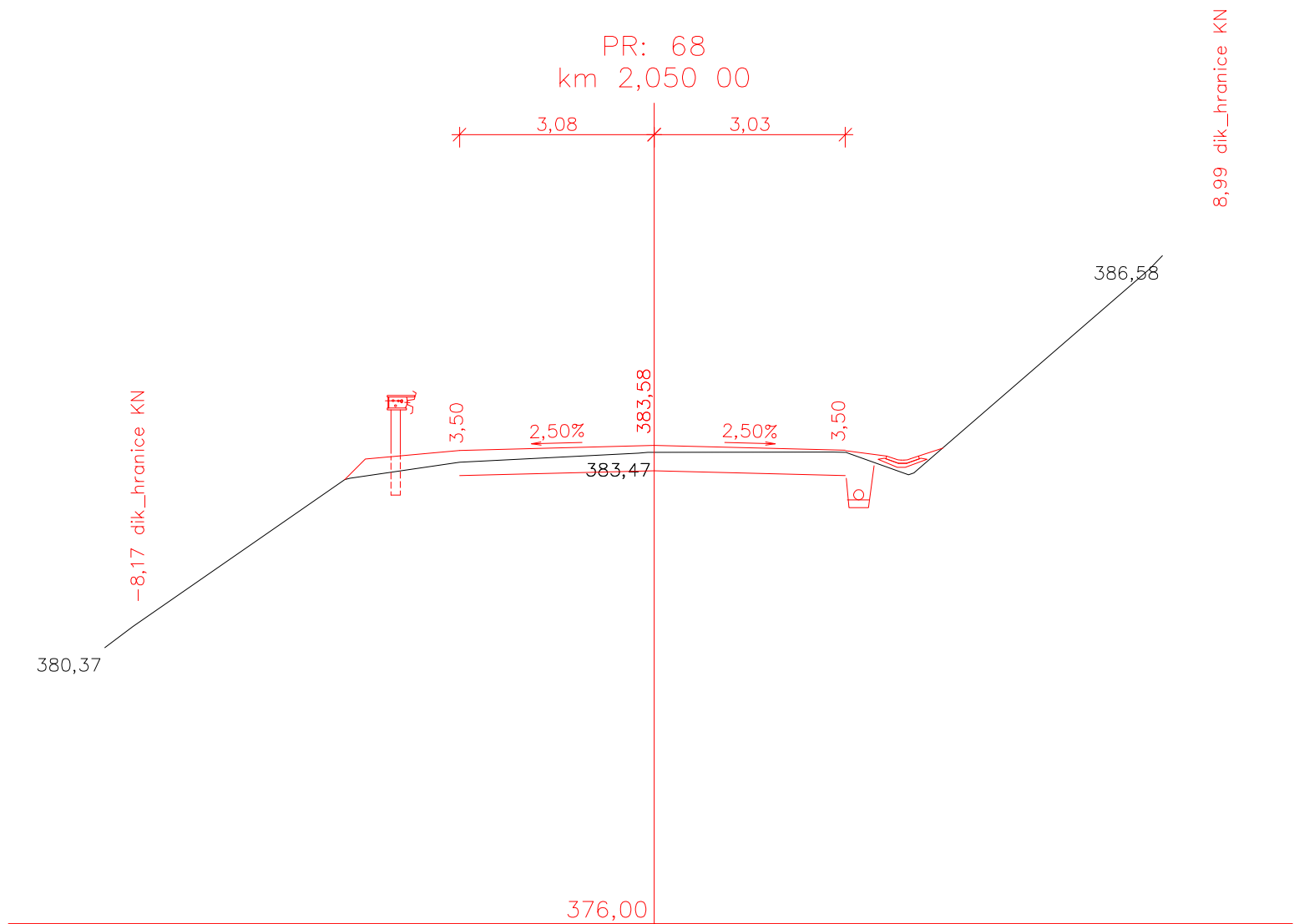
PR: 53
km 1,900 00

3,70 3,14

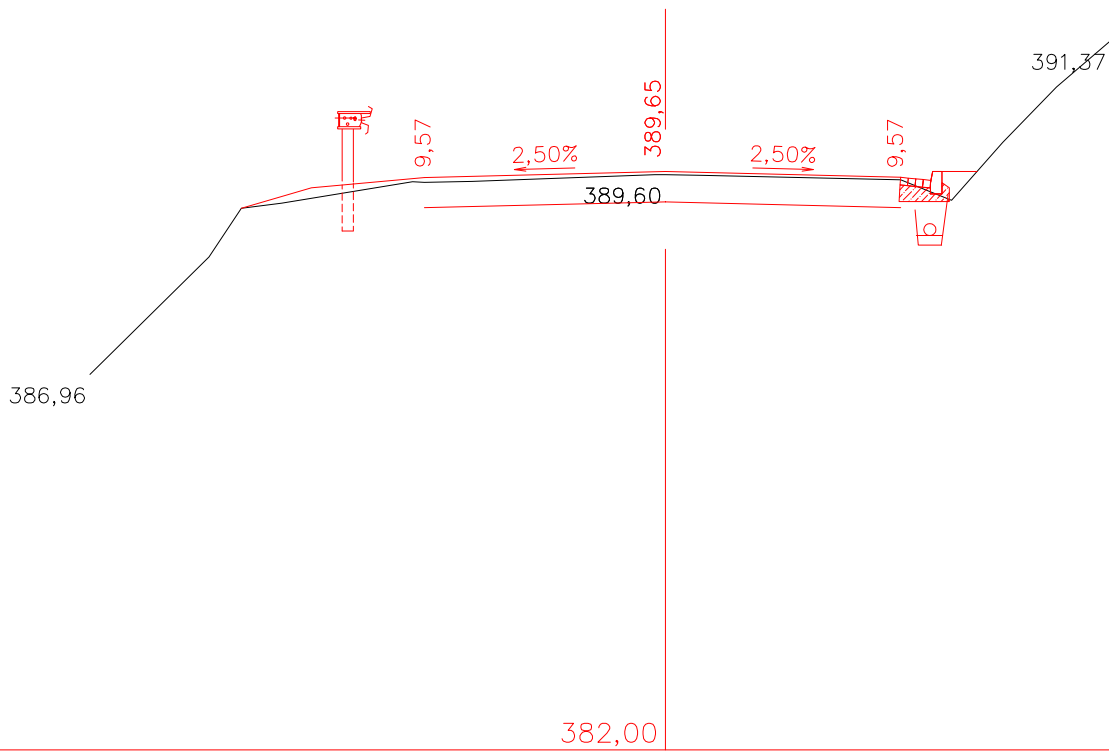




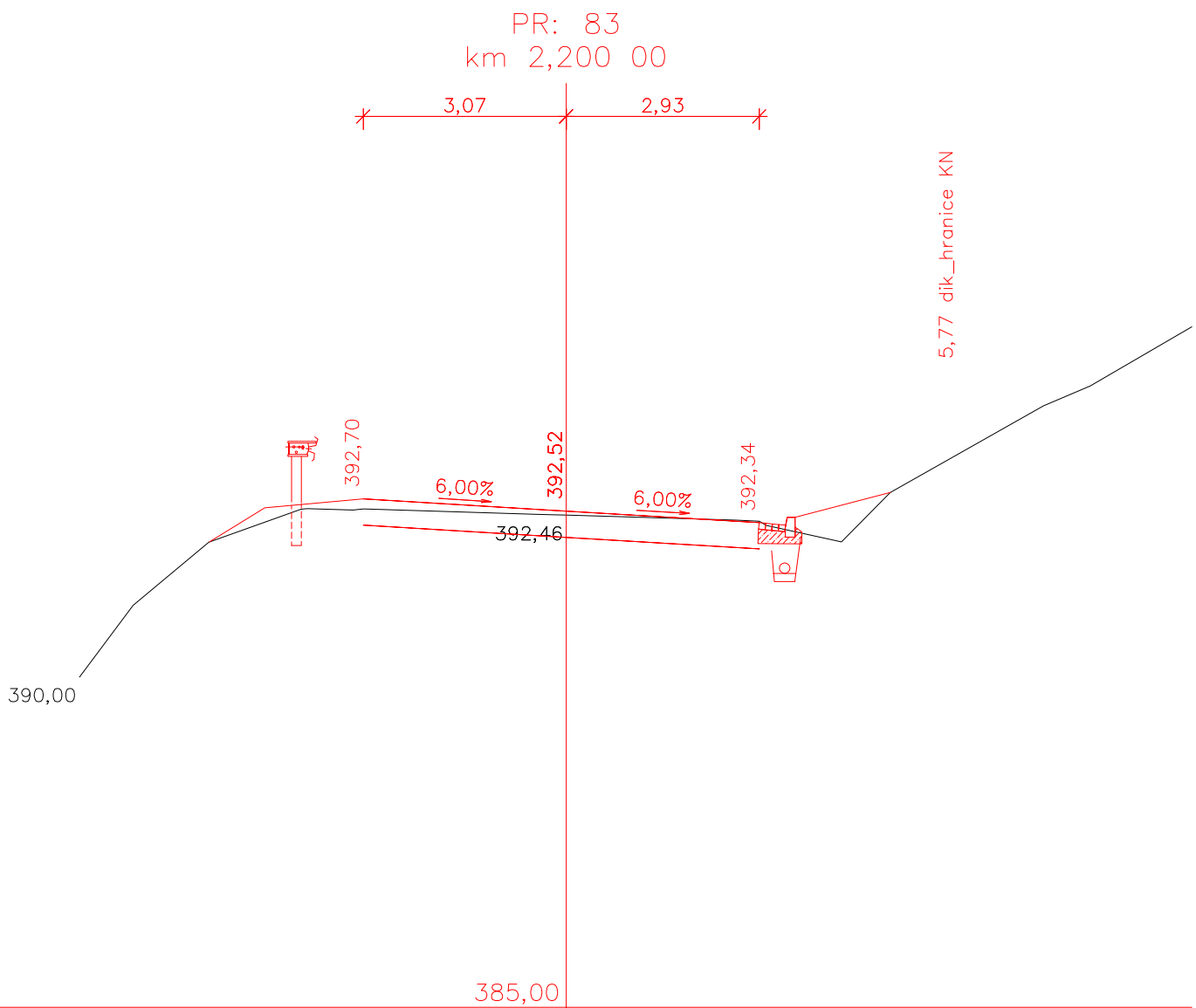




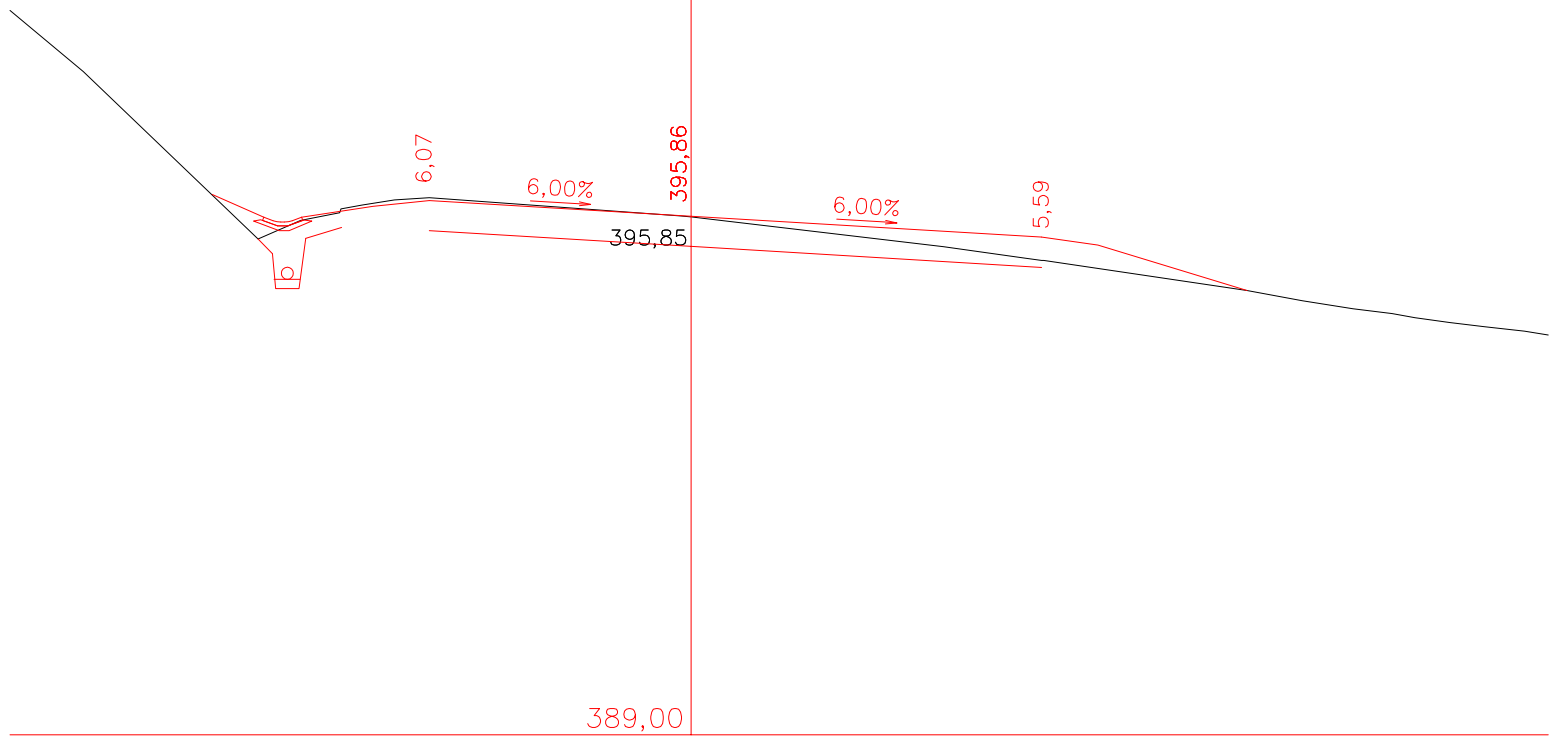
PR: 78
km 2,150 00



8,52 dik_hranice kN



PR: 88
km 2,250 00

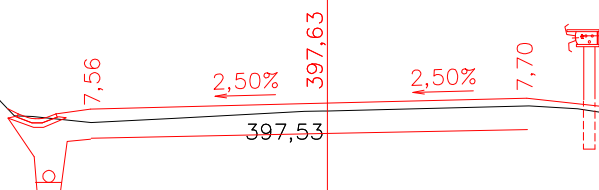


-7,43 dik_hranice KN

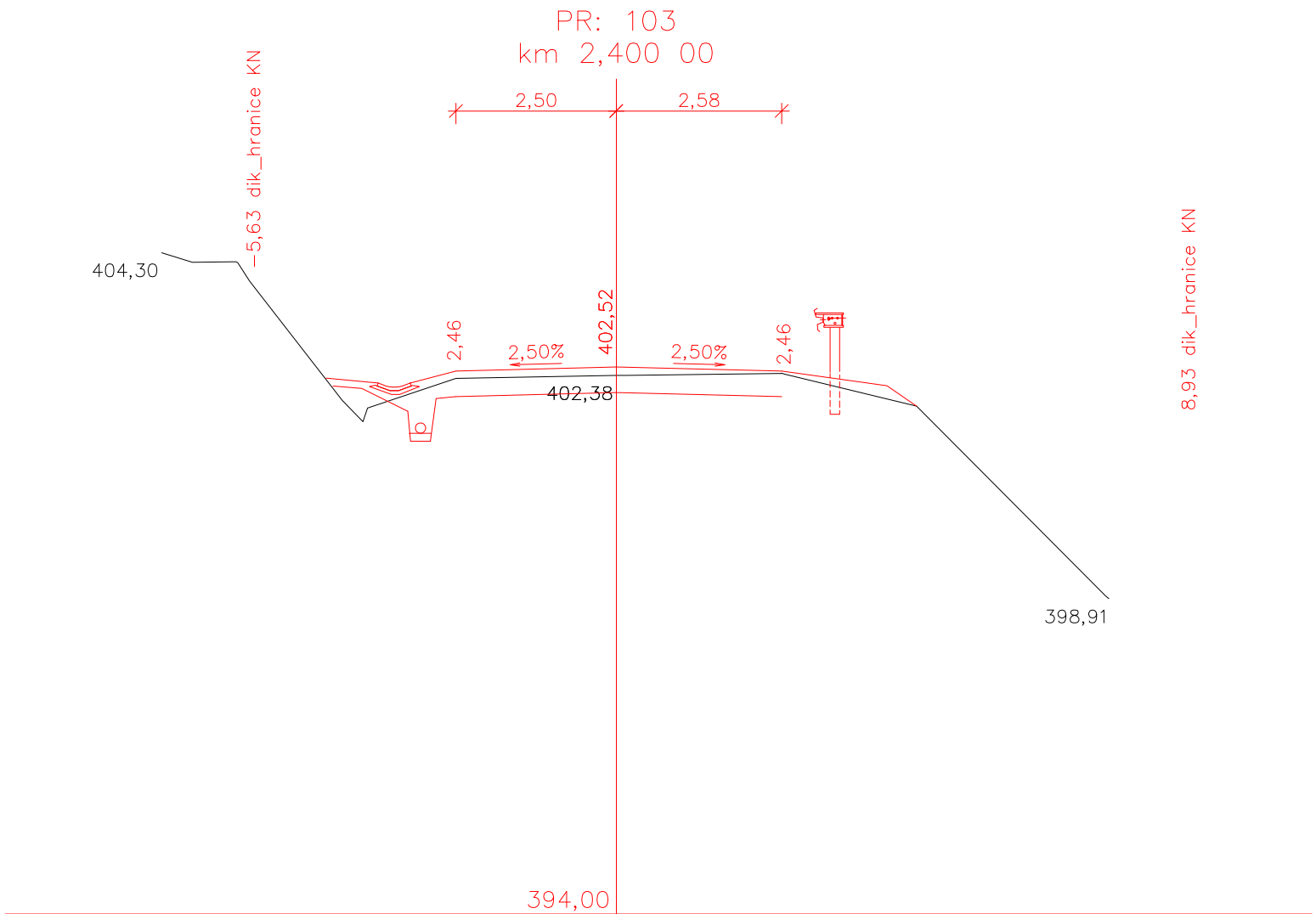
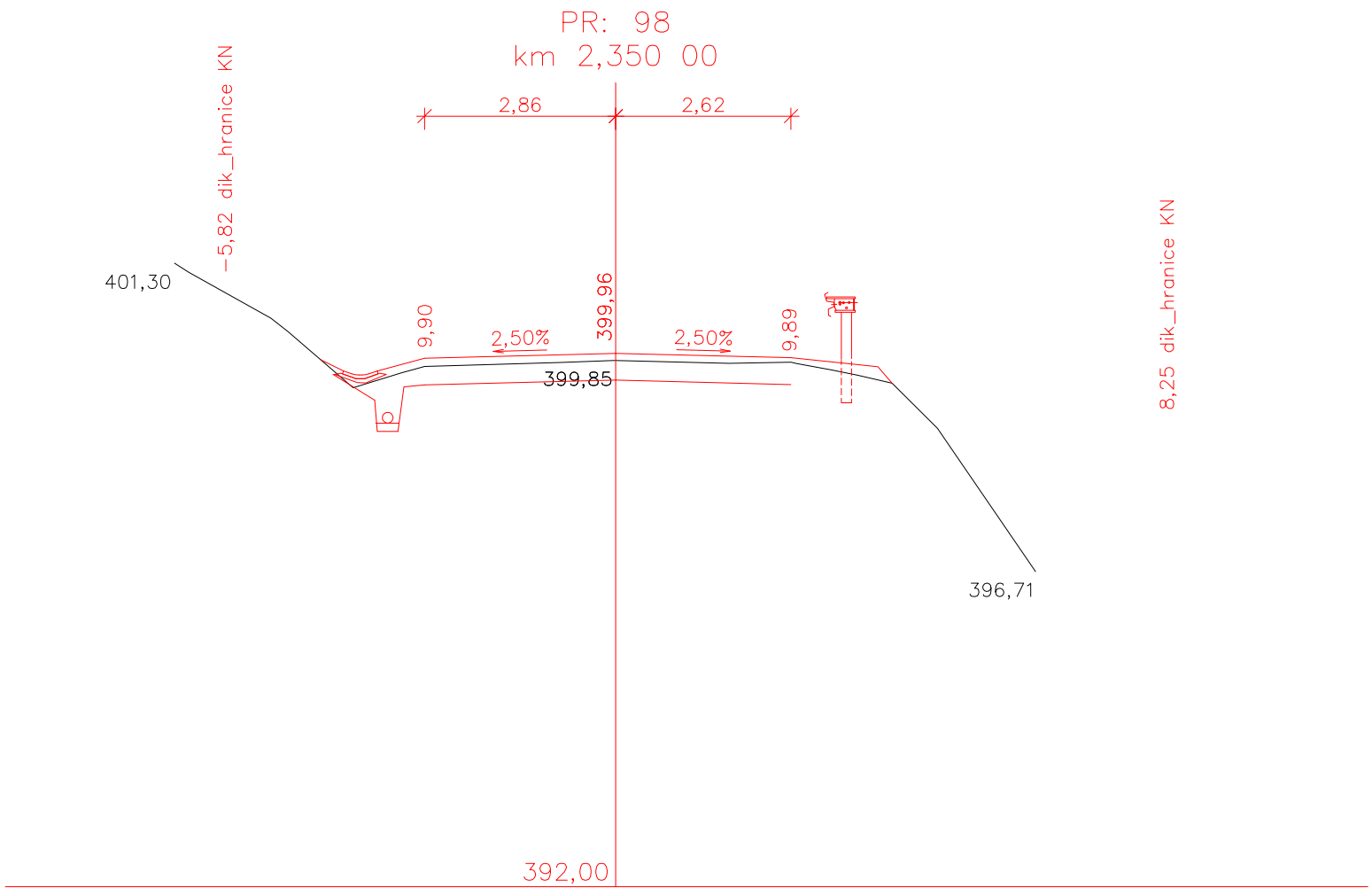
PR: 93
km 2,300 00

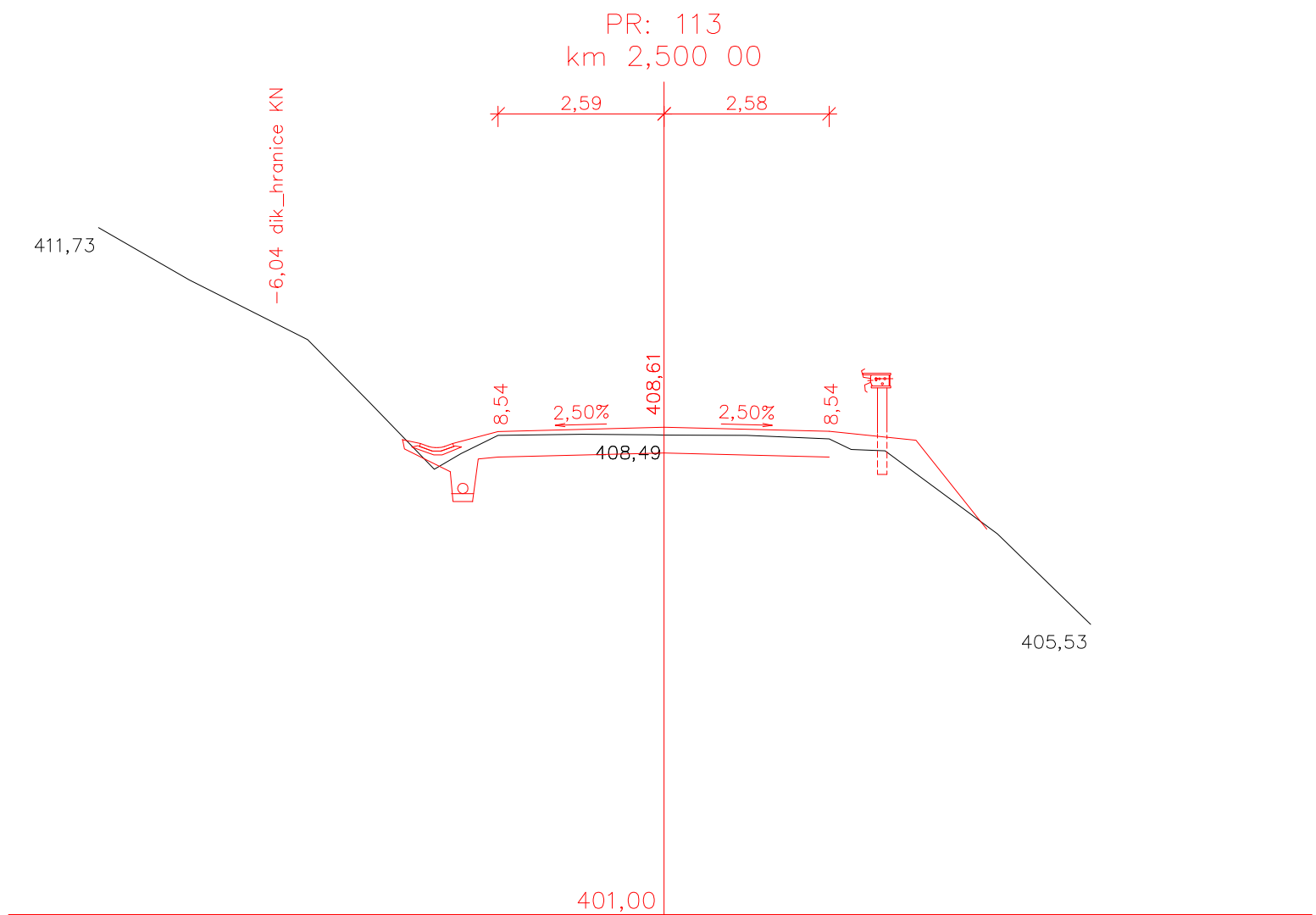
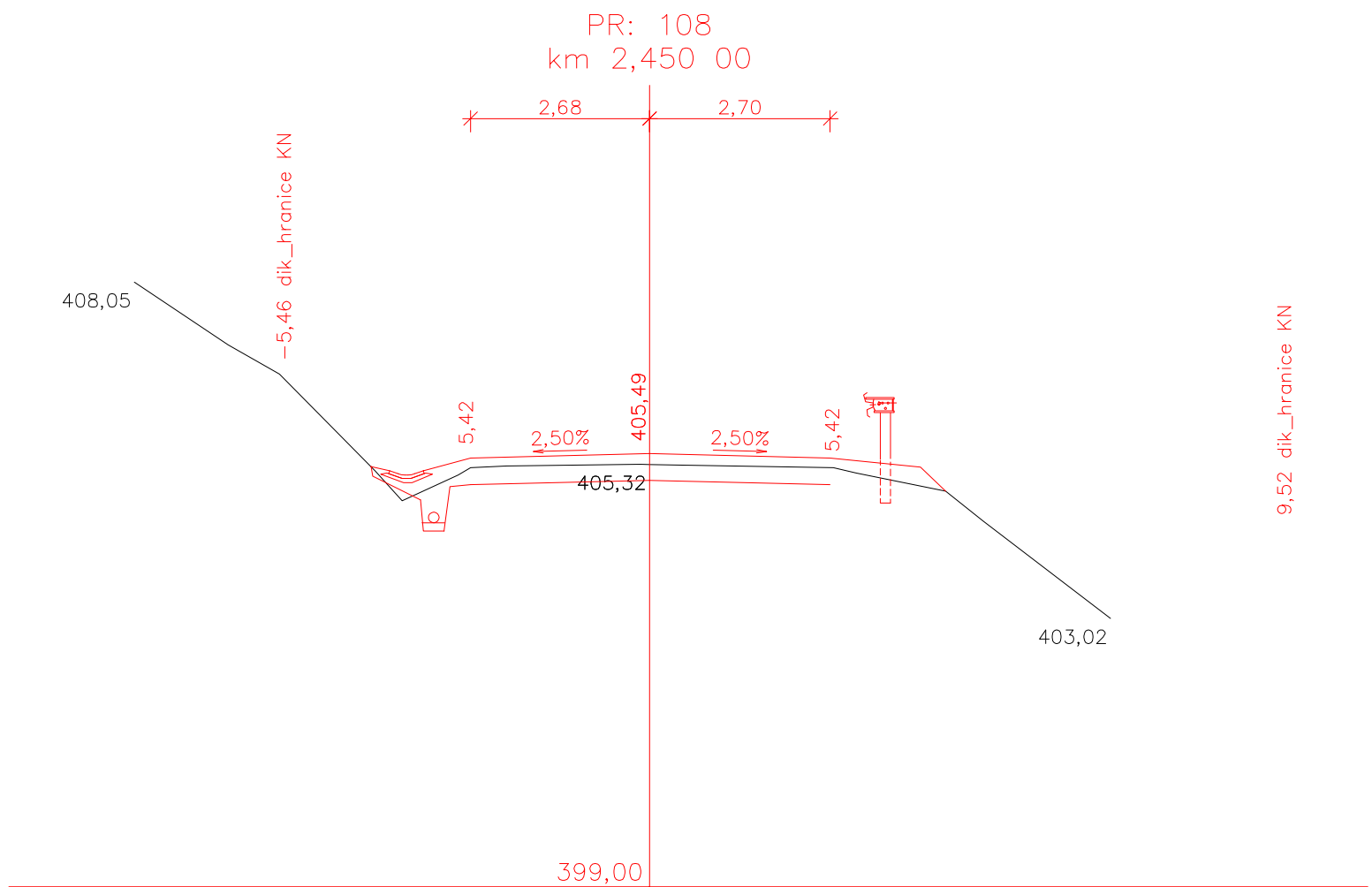
3,13 2,64

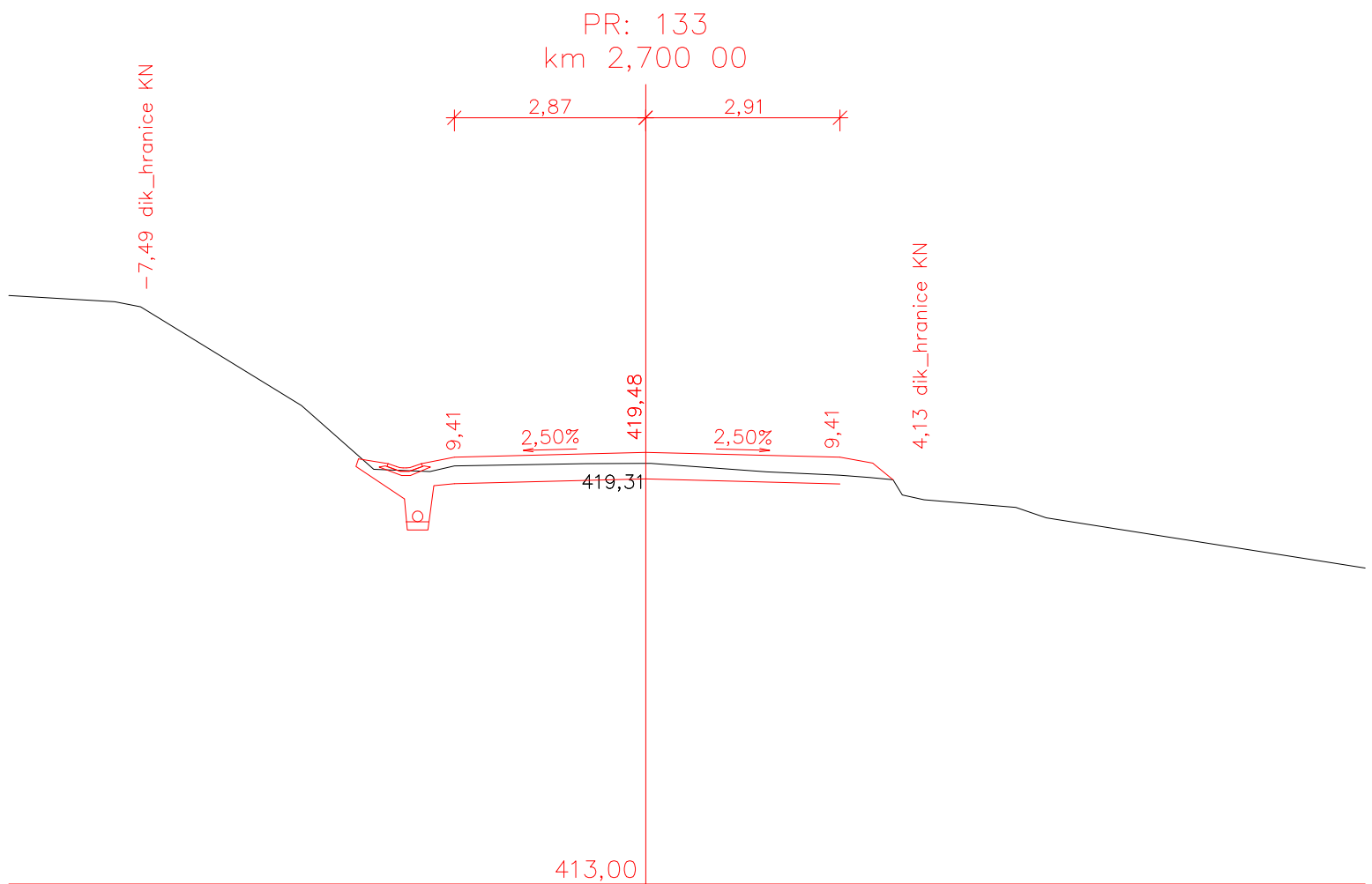
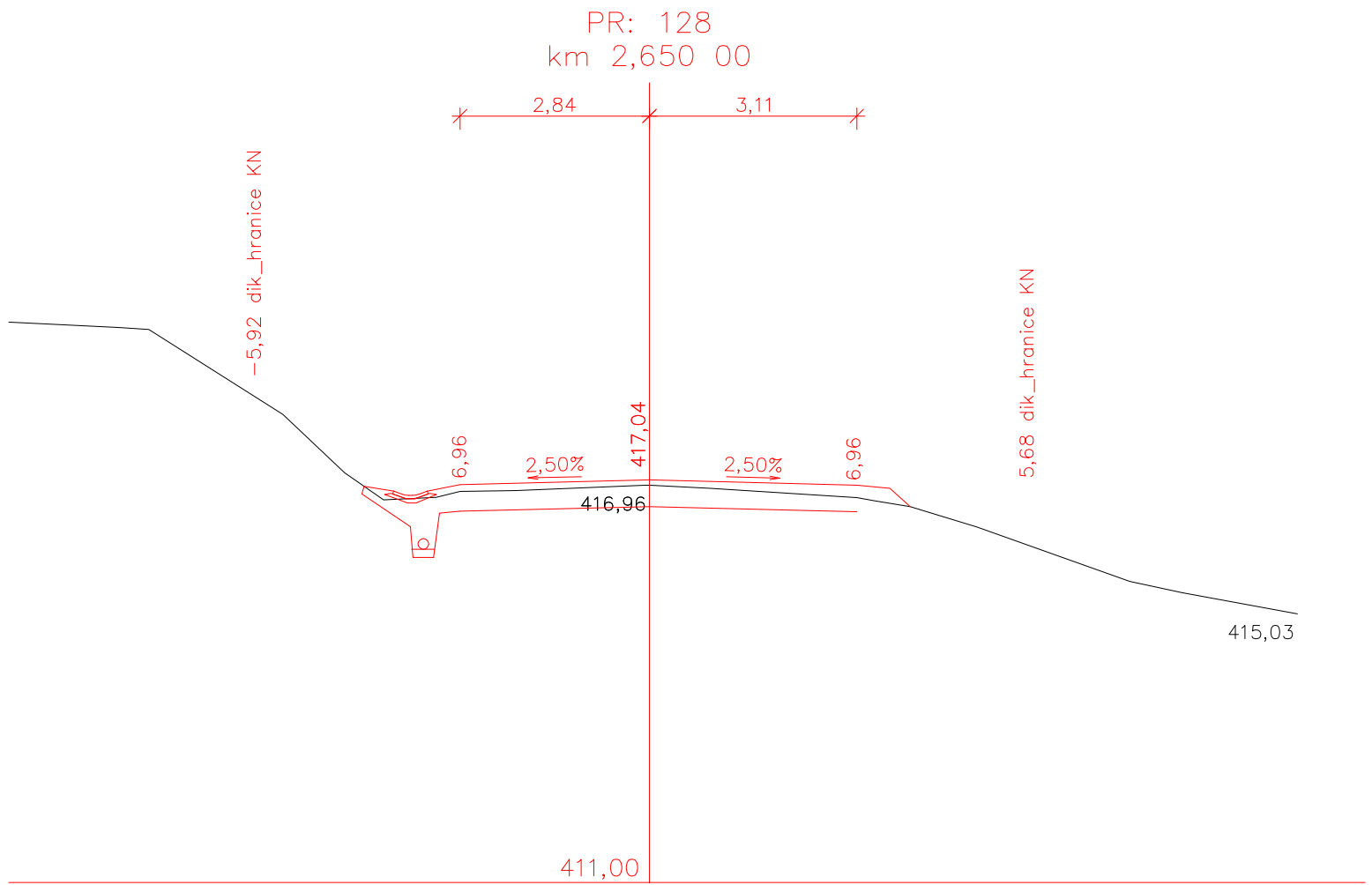
399,51

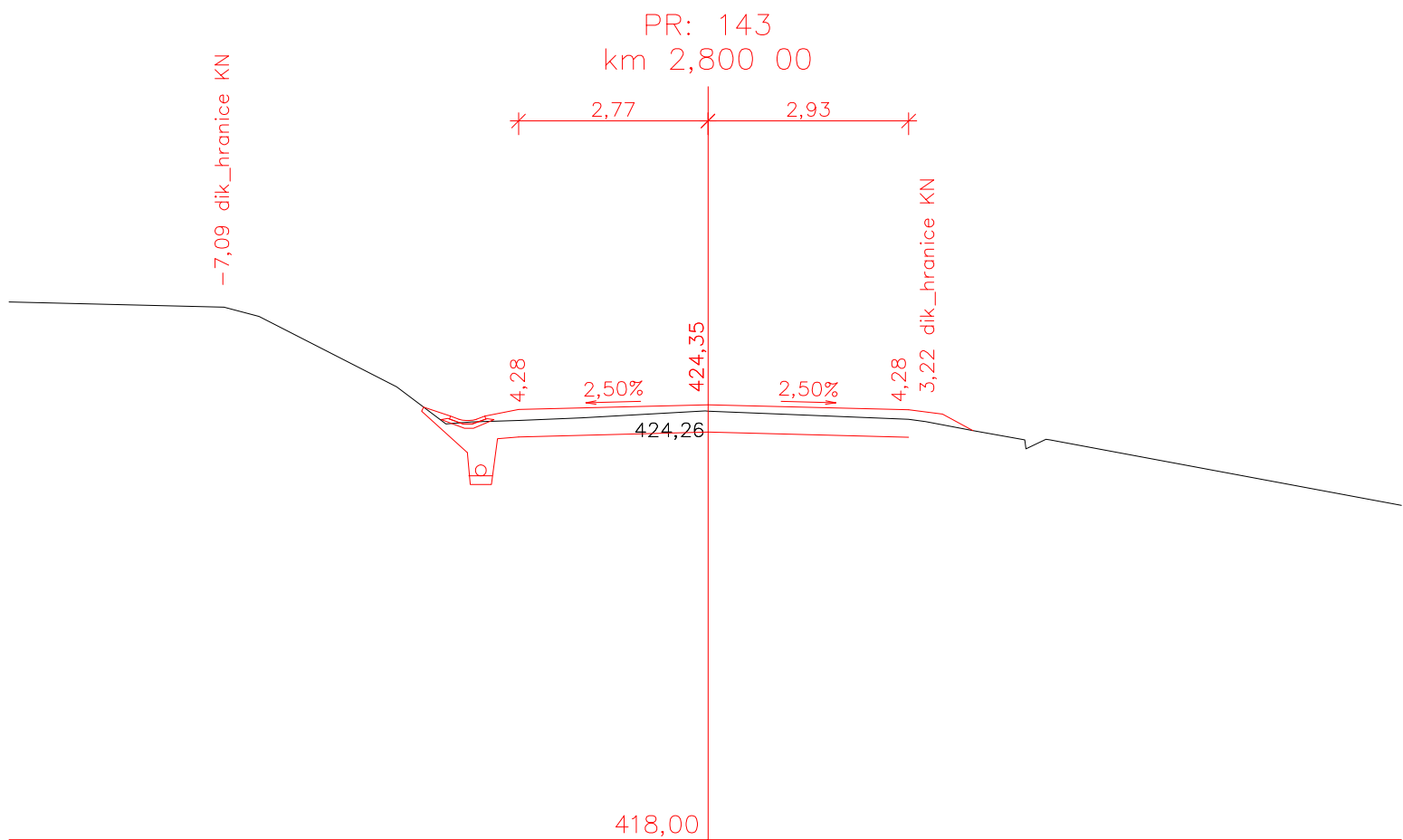
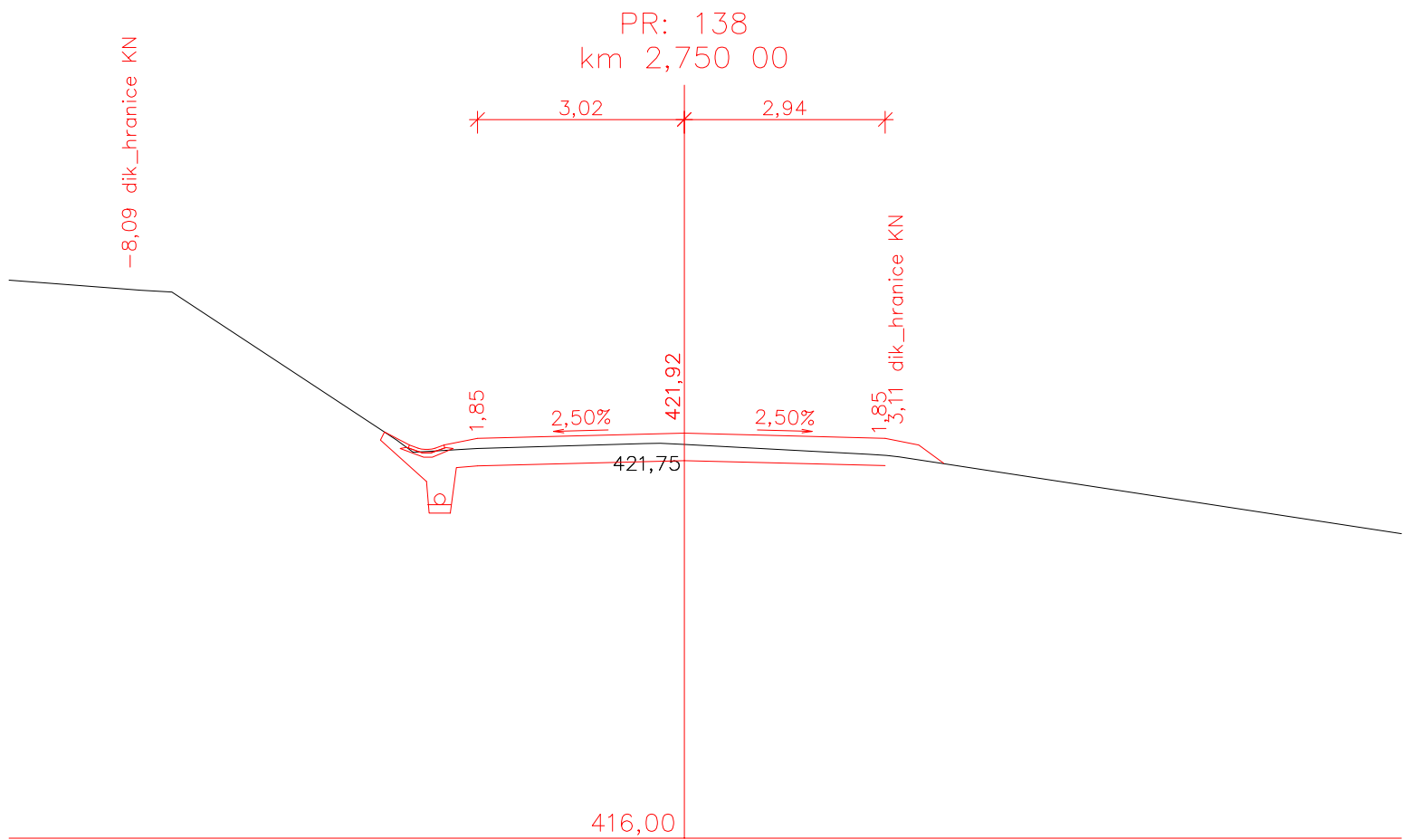


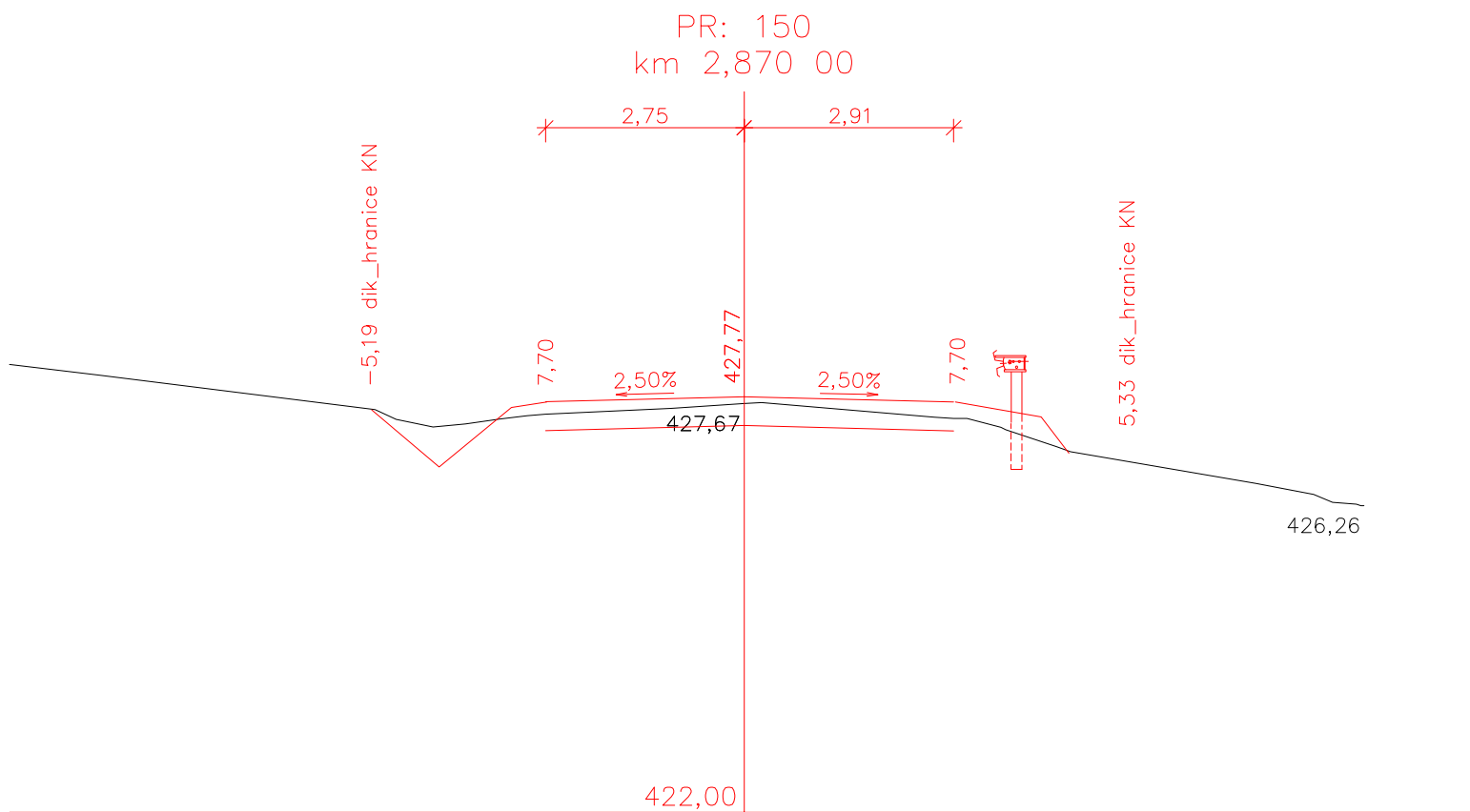
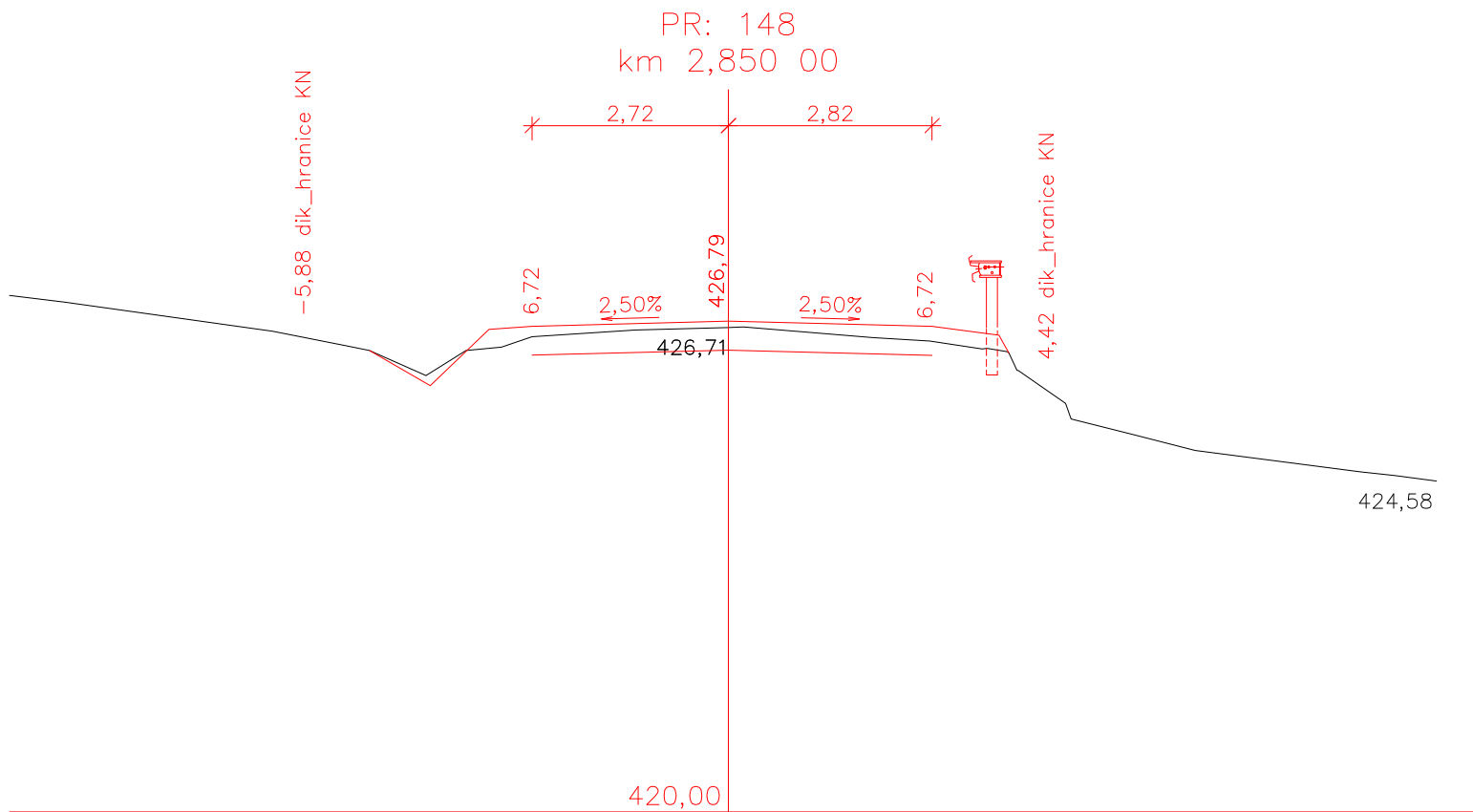
386,00

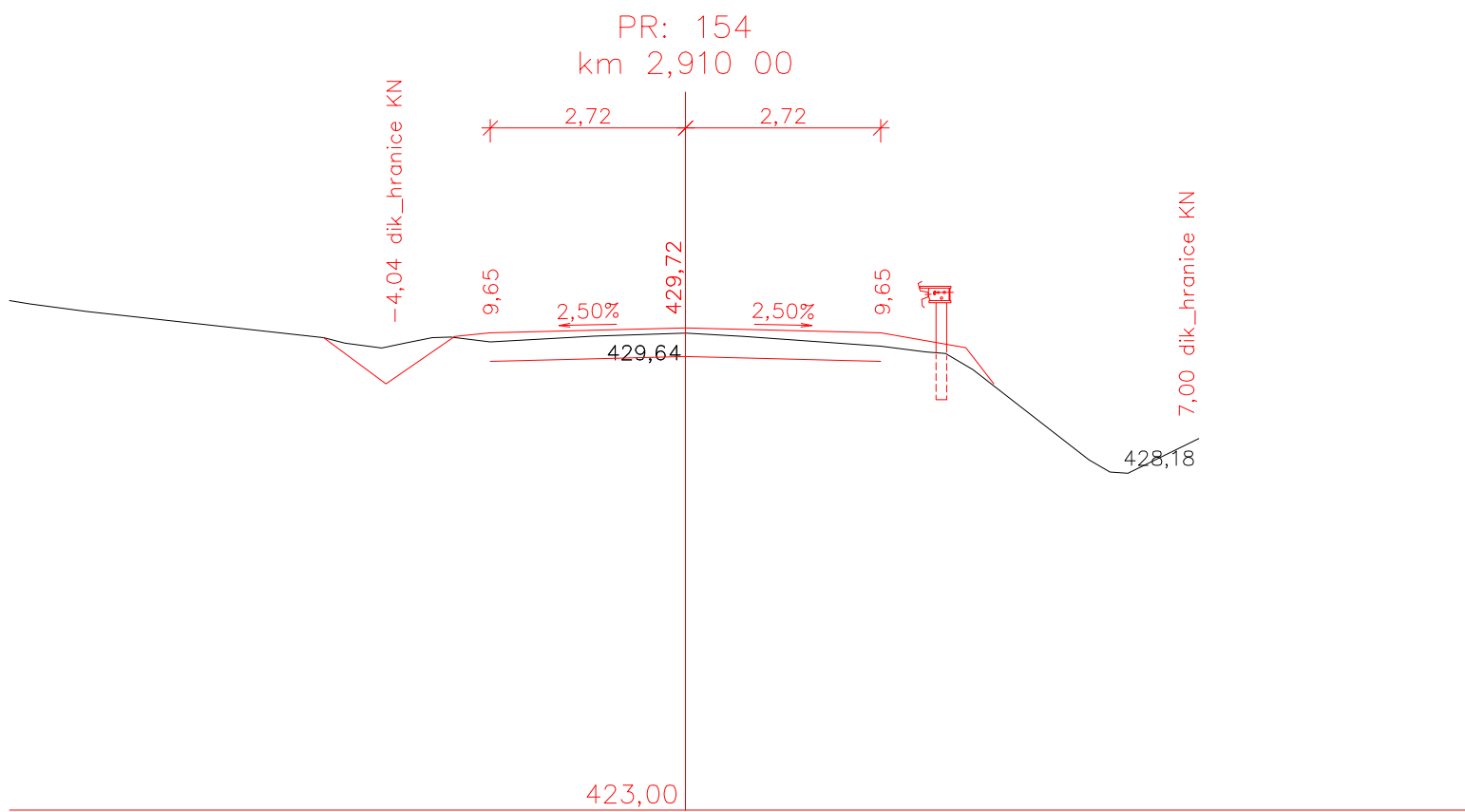
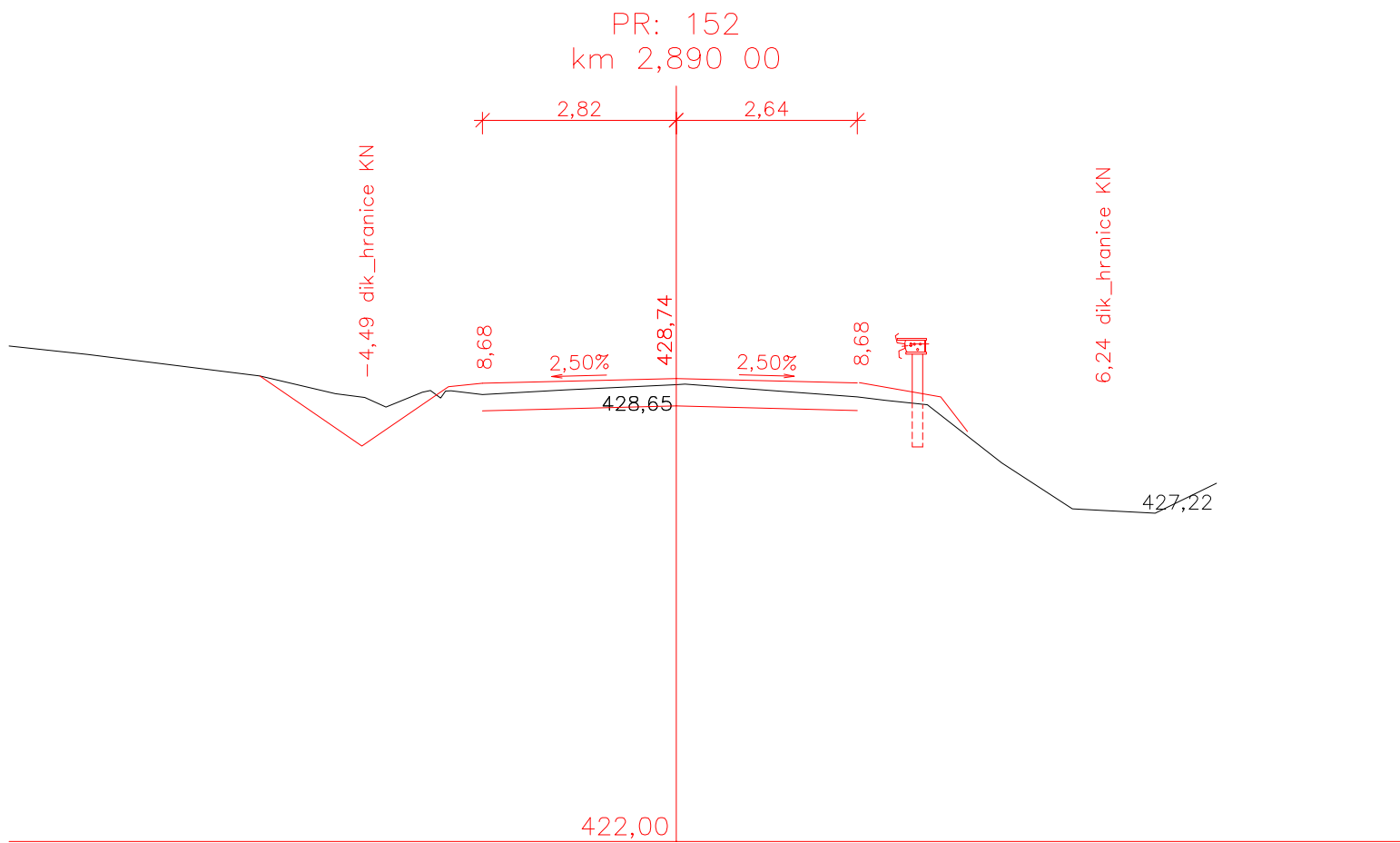




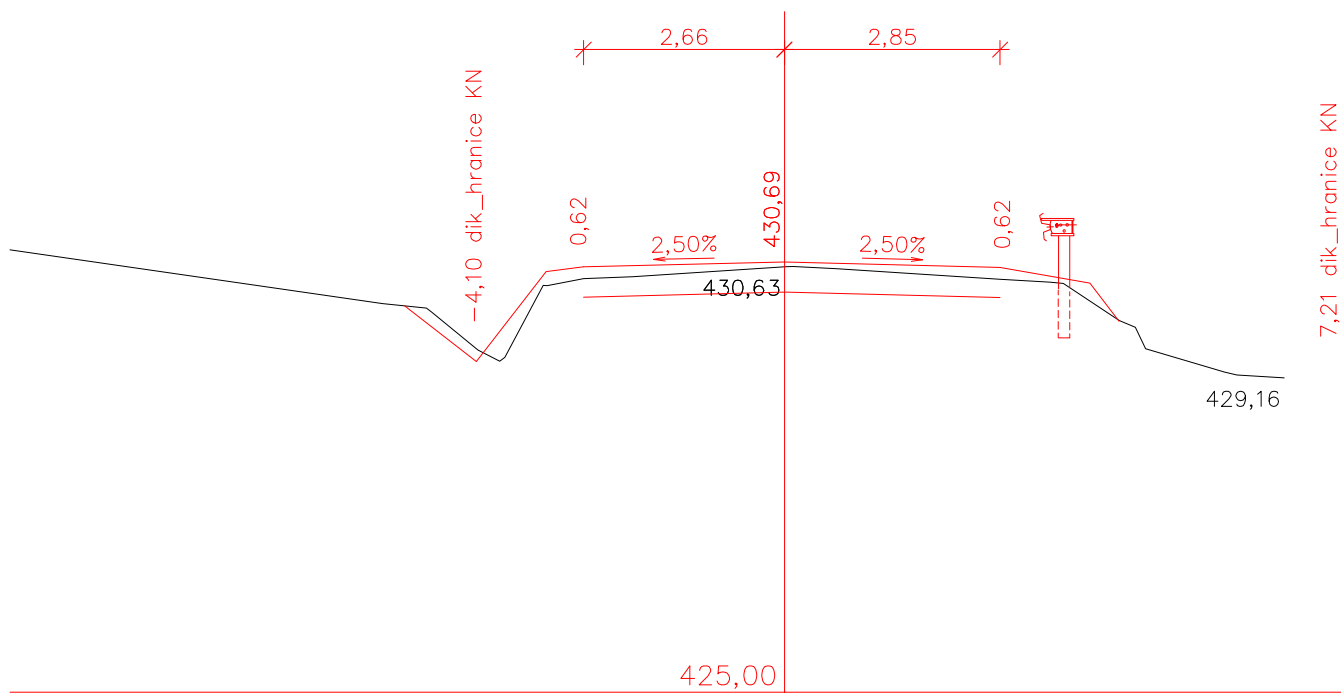




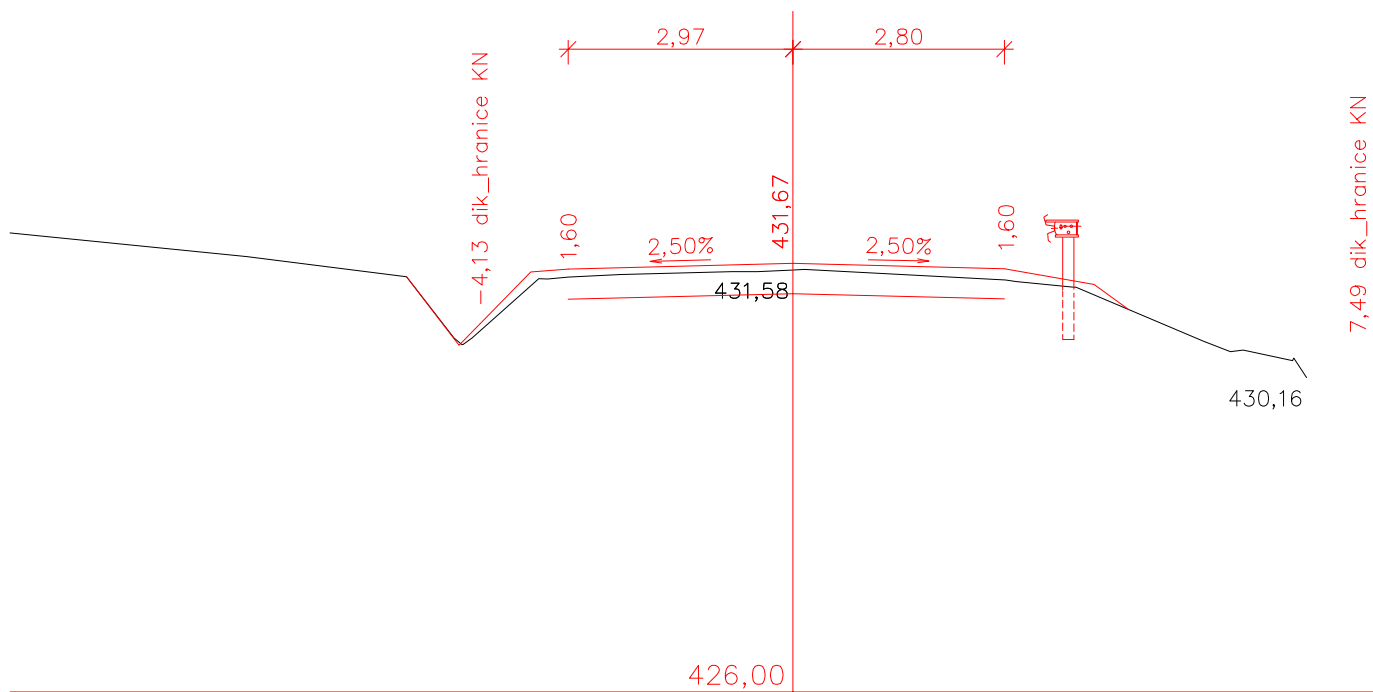


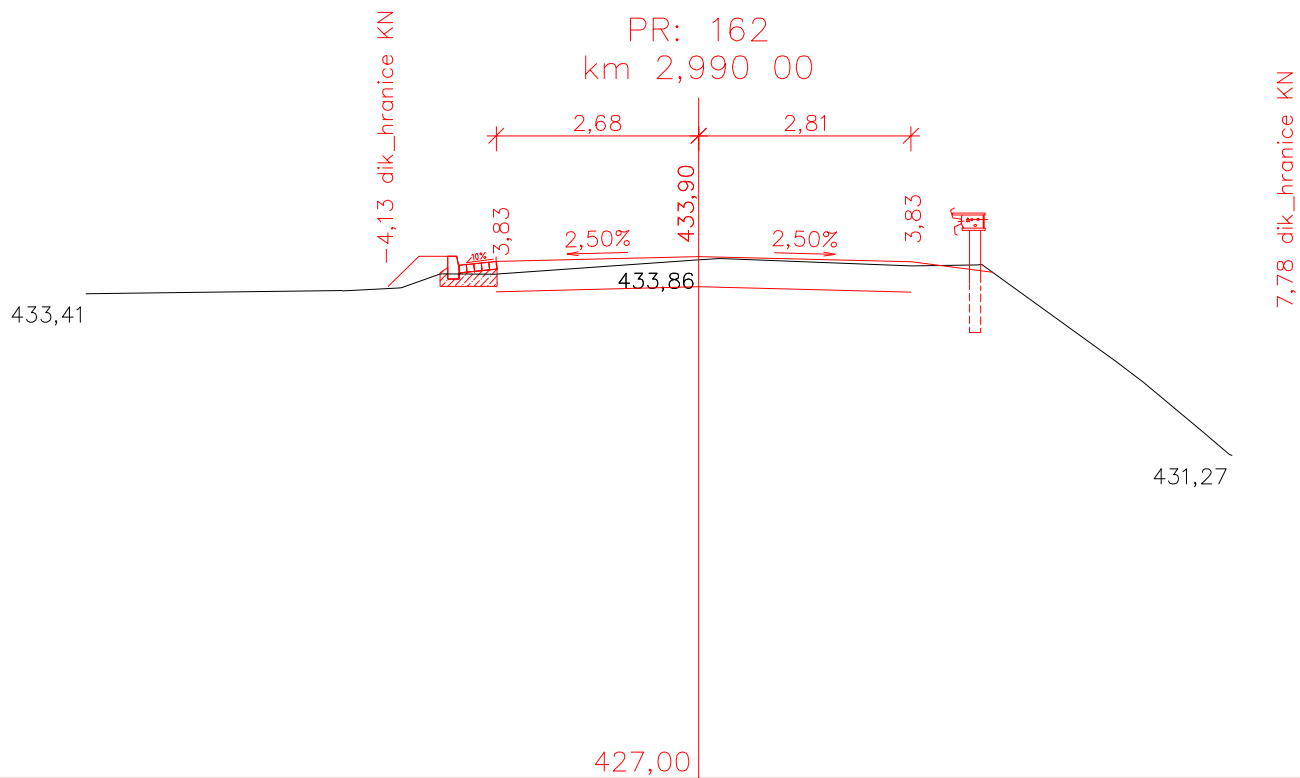
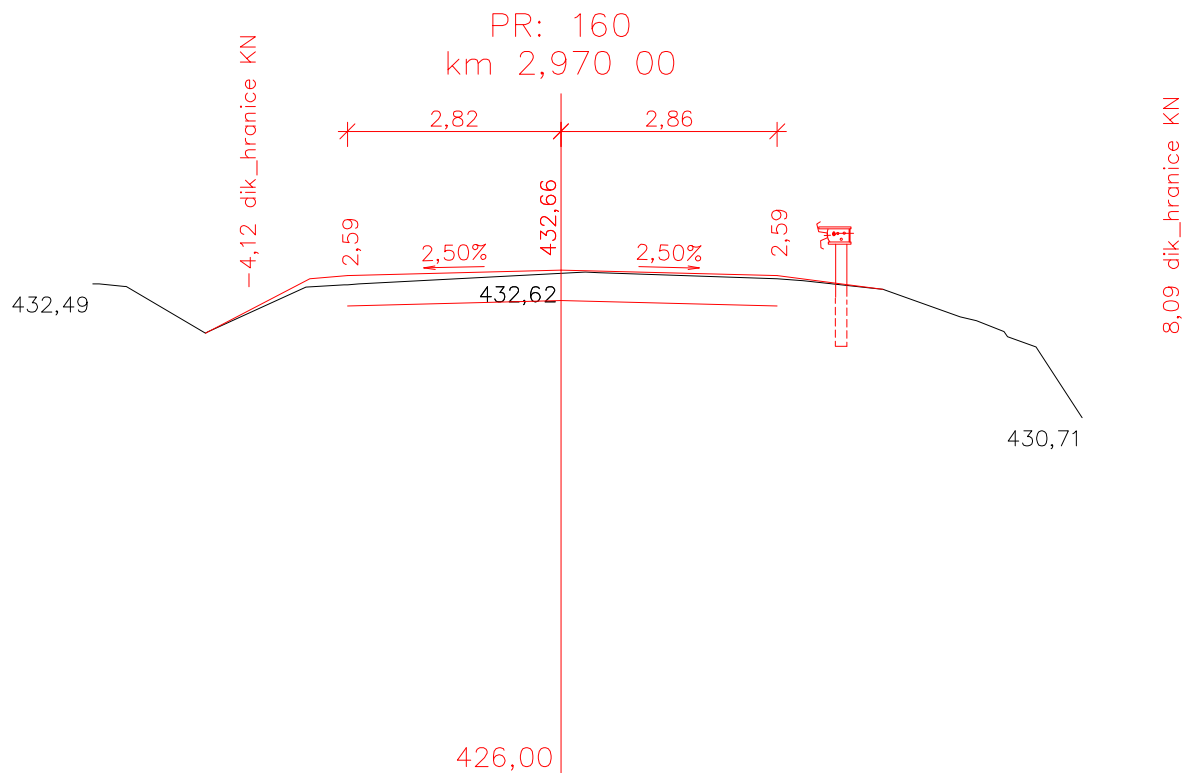


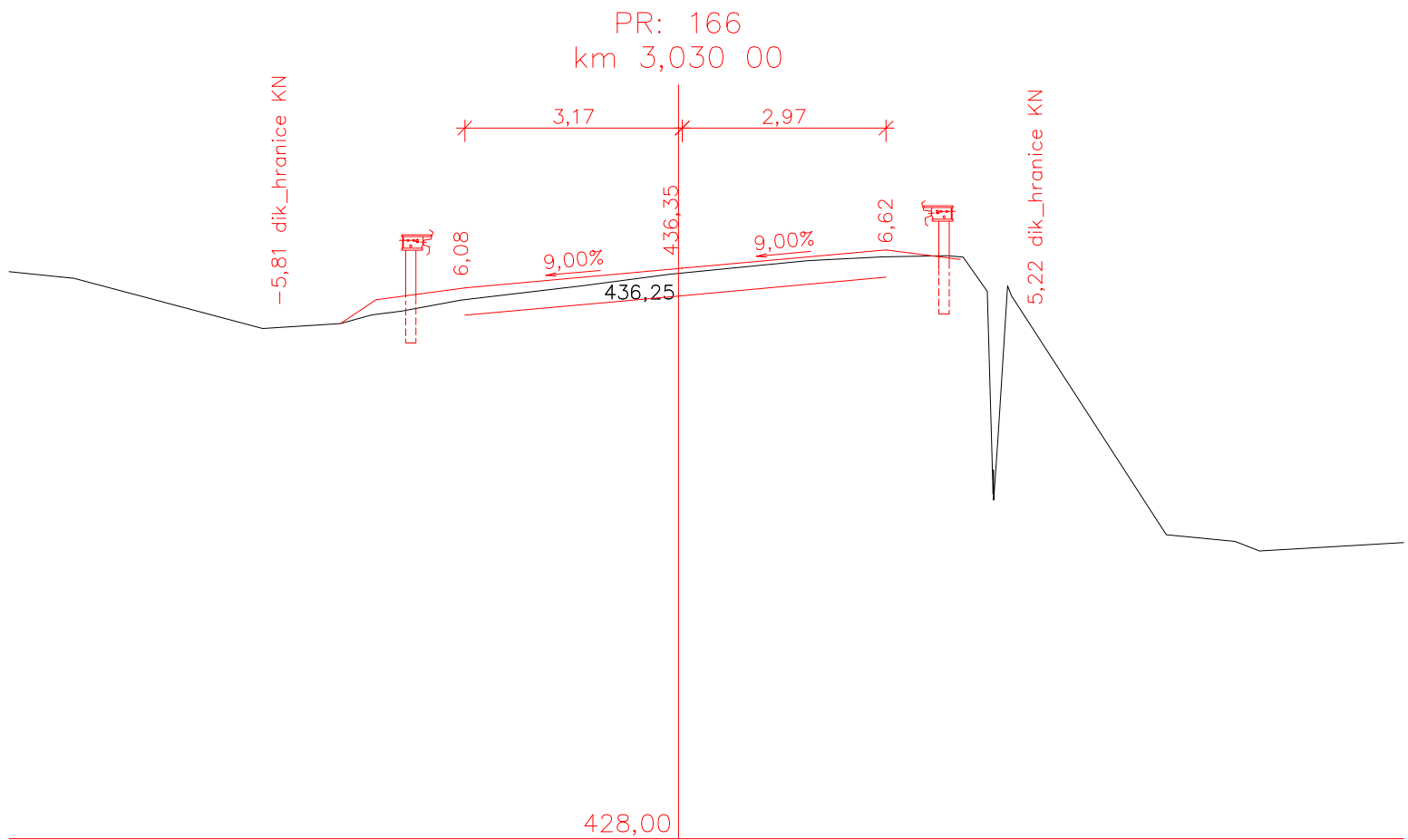
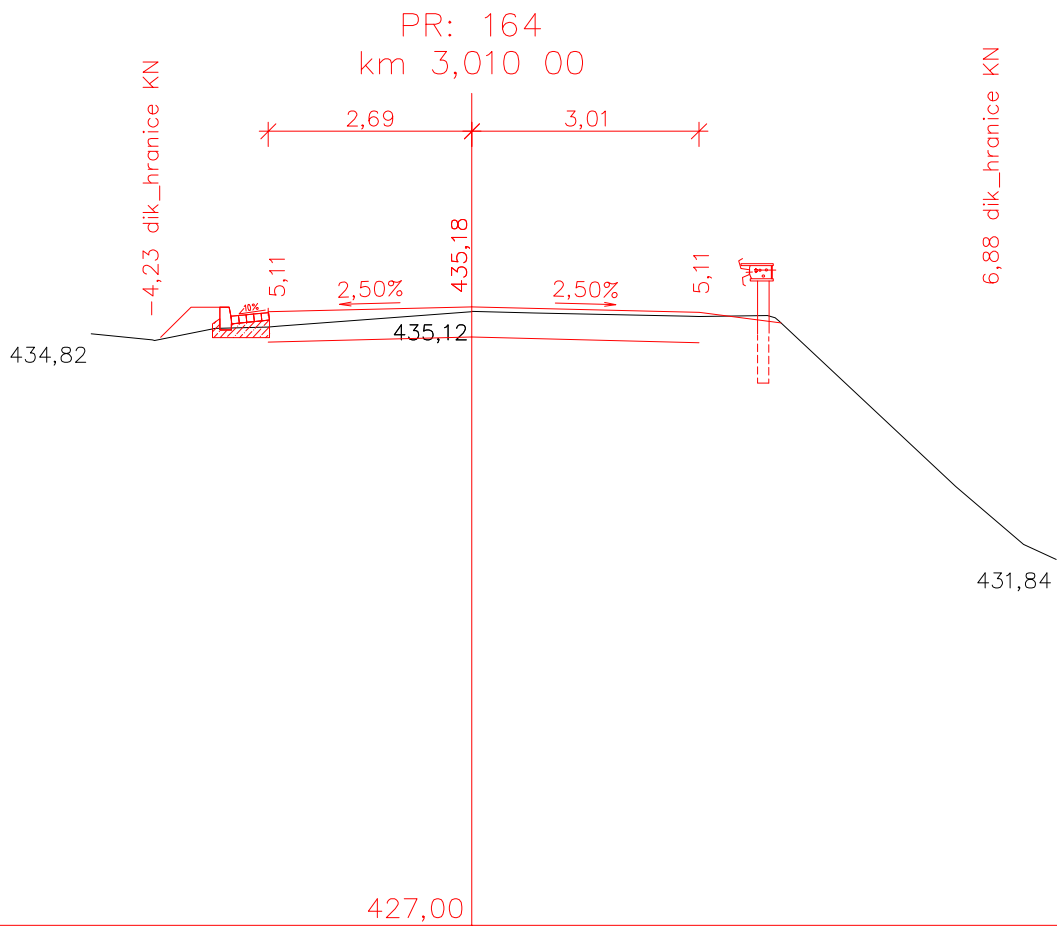
PR: 156
km 2,930 00



PR: 158
km 2,950 00







PR: 168
km 3,050 00

-5,40 dik_hranice KN

3,15 3,50



7,45

9,00%

437,73

9,00%

8,04



4,39 dik_hranice KN

437,46

435,94

430,00

PR: 170
km 3,070 00

-6,46 dik_hranice KN

2,71 3,05

8,94

2,50%

439,01

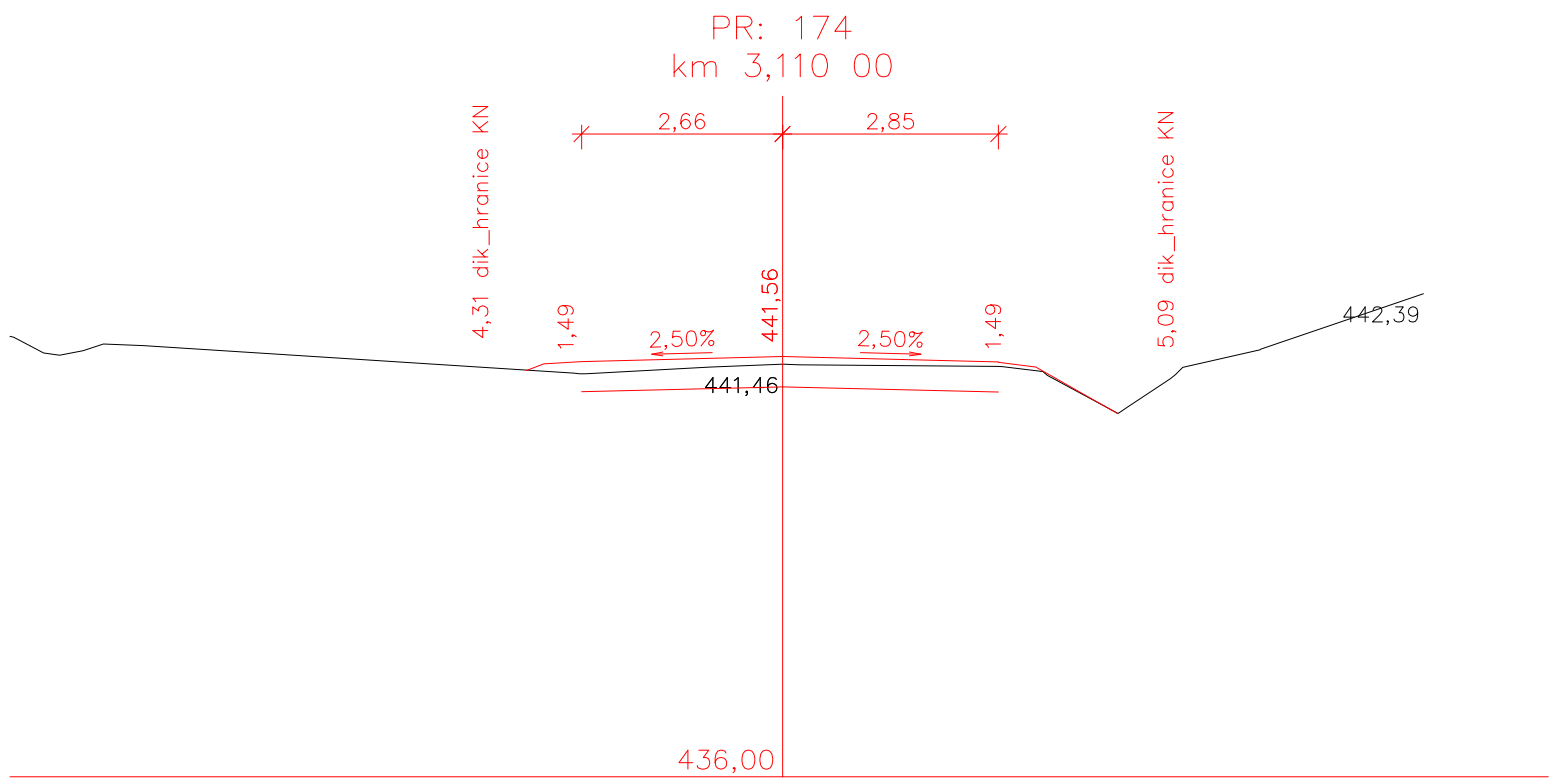
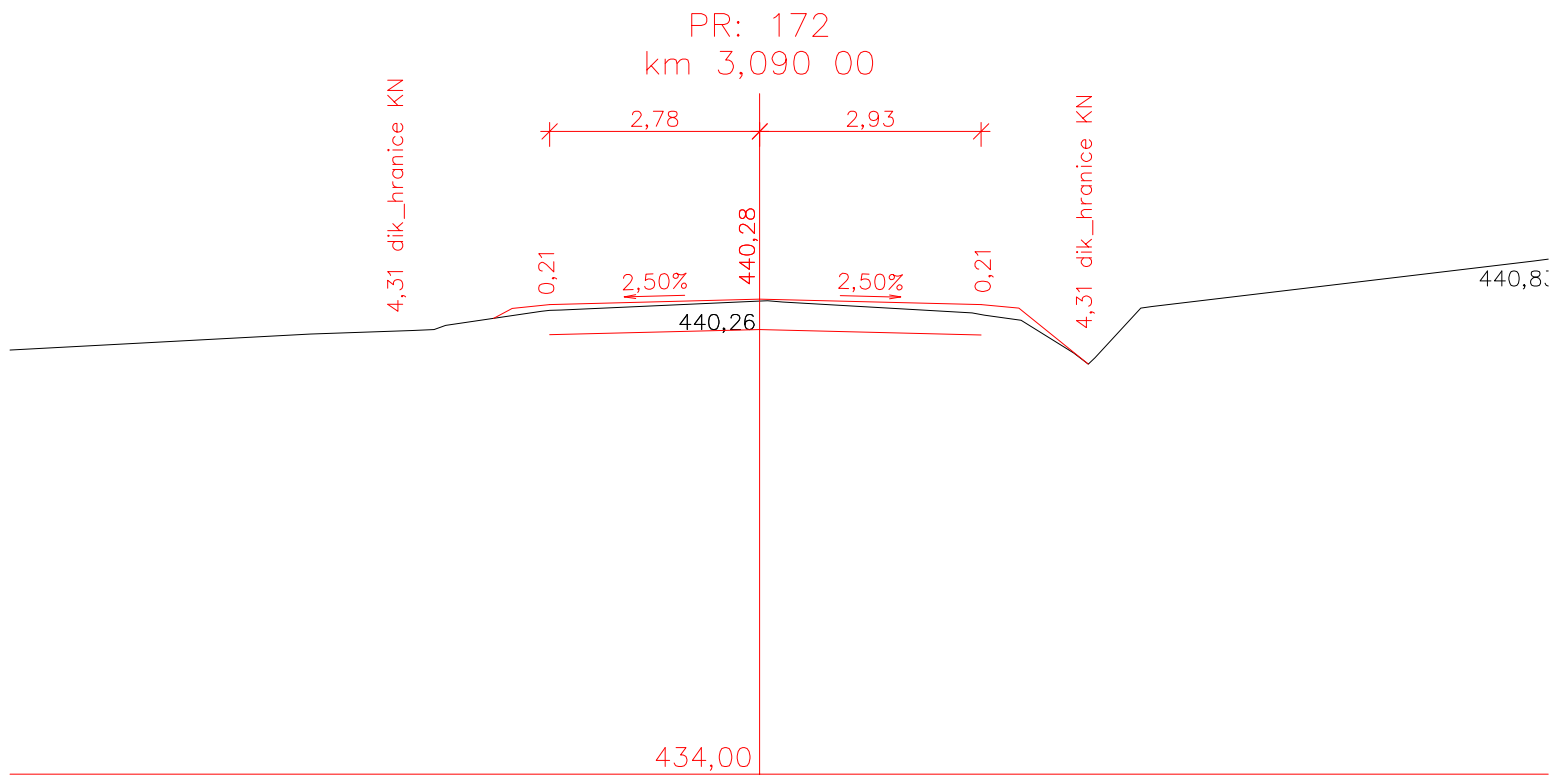
2,50%

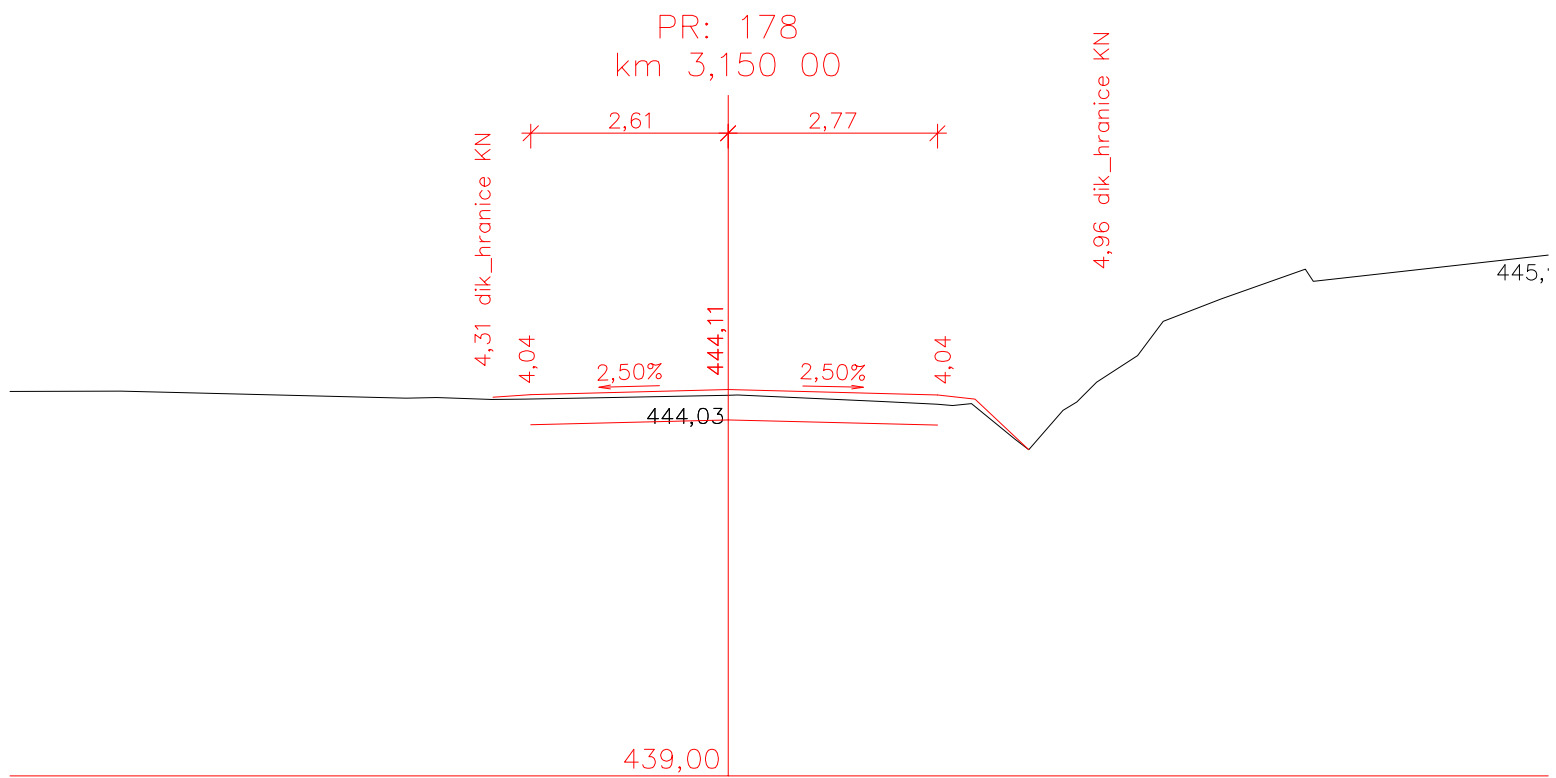
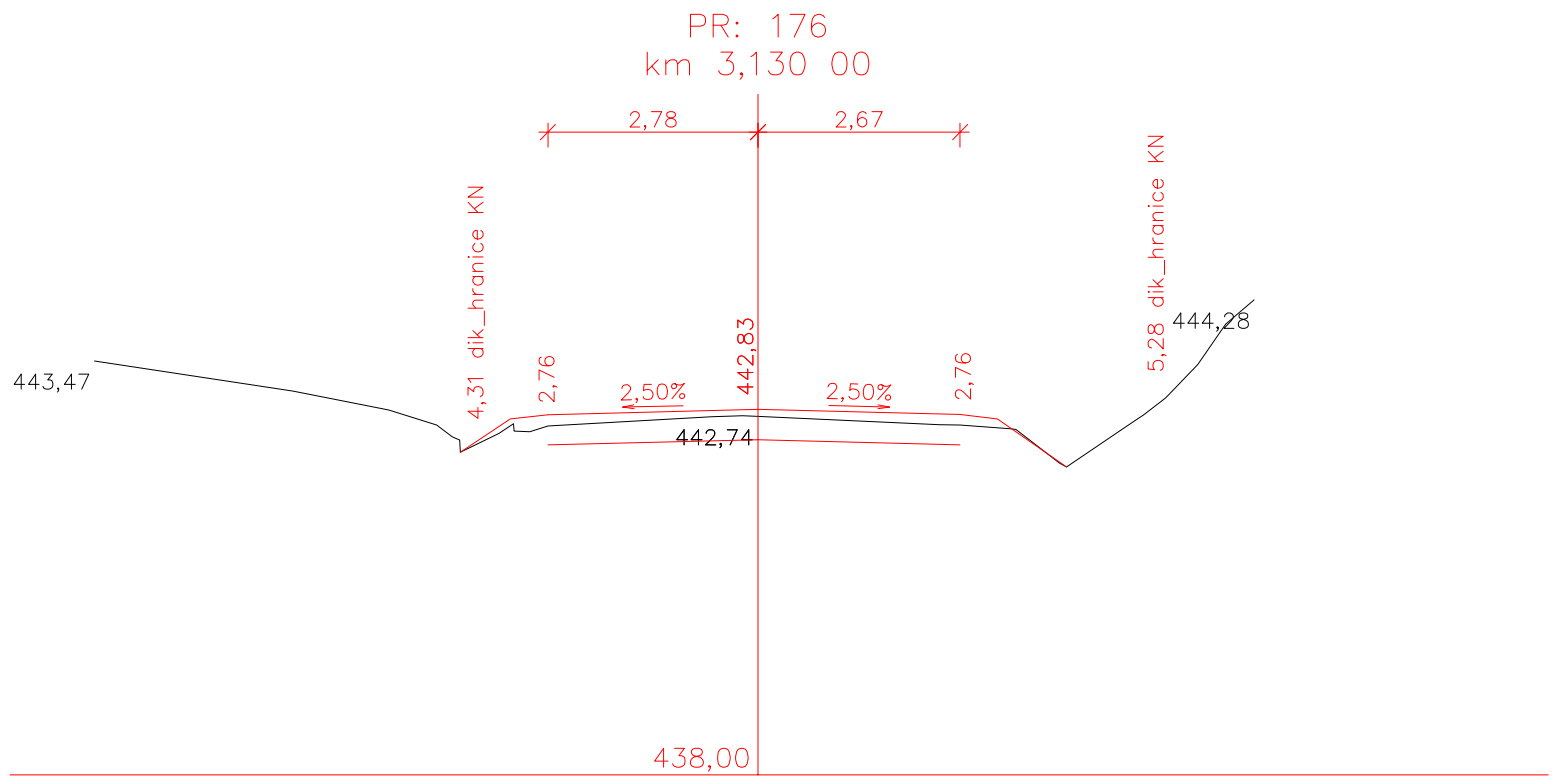
2,74 dik_hranice KN

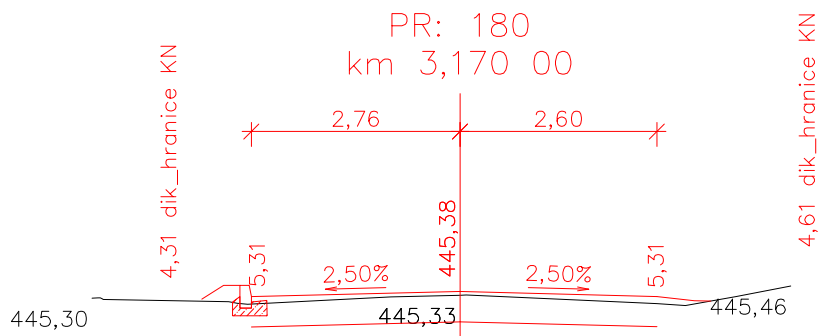
8,94

438,94

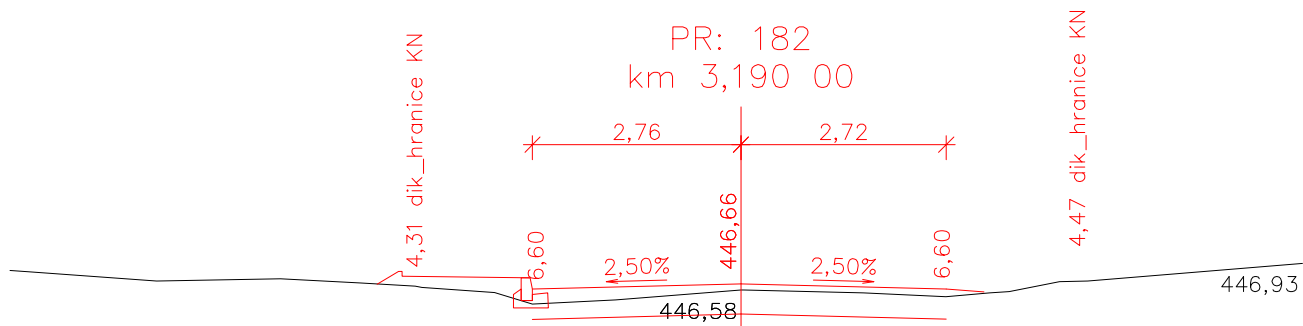
431,00



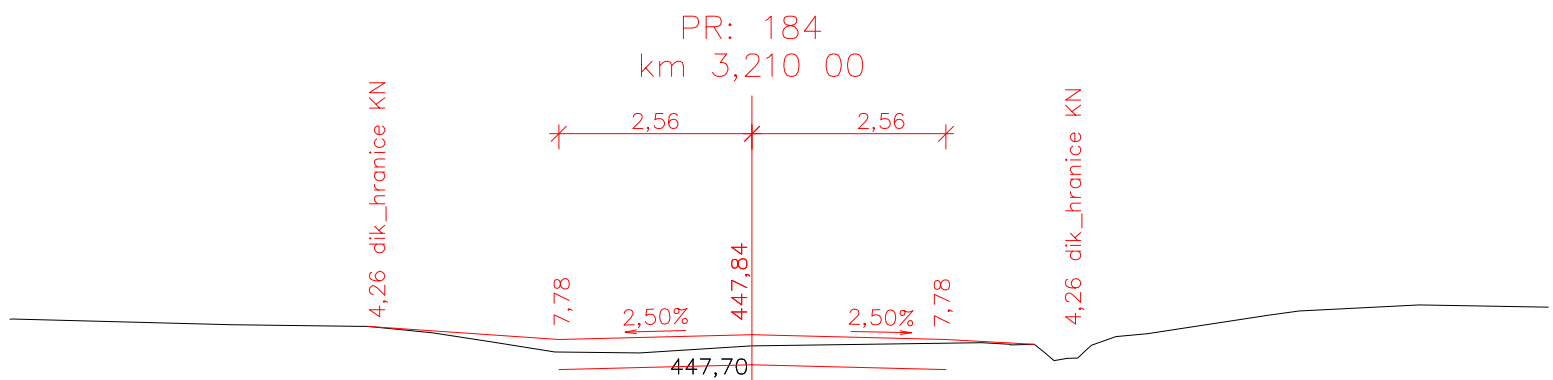




440,00



442,00



443,00

